

UM101 Introduction to UMSL



Touhill promotes student life

UM-St. Louis Chancellor Blanche M. Touhill joined the University in 1965. Her focus for the campus is diversity and education.



File Photo/ The Current

STANFORD GRIFFITH
Editor-in-Chief

UM-St. Louis, with over 15,000 students, is the third largest university in Missouri, the largest educational institution in the St. Louis area and the only public research university in the metropolitan region.

Chancellor Blanche M. Touhill has the large job of leading and shaping UM-St. Louis. She is also a professor of history and education.

Joining the University in 1965 as an assistant professor of history, Touhill became the first female faculty member of the history department. She was also the first female tenured faculty mem-

ber. In 1974, she became the first female administrator at the University when she assumed the position of Associate Dean of Faculties. Two years later, Touhill became the Associate Vice Chancellor for Academic Affairs. Continuing her climb to the top, she became the Vice Chancellor of Academic Affairs in 1987.

In 1990, Touhill was named the Interim Chancellor. She assumed the full role of Chancellor in April 1991. Touhill continued teaching until this time.

"Our future is bright," Touhill said with confidence. "I believe firmly in this campus."

The big focus for Touhill is diversity and education.

"We have always focused on the academic side," Touhill said.

That focus on education is a large reason for the success of UM-St. Louis. Continuing that theme is vital to the

advancement of the University.

"We need to grow more academic programs and develop more research programs," Touhill said.

Touhill also believes that student interaction is vital not only to the University, but also to students.

"I think the campus has to work on building a community of student scholars," Touhill said. "That translates into more student life and more student community involvement."

Touhill commented that since the University is in an urban setting, students are exposed to a great variety of people.

UM-St. Louis also has a large foreign student population. Touhill believes that this is a great asset to the students.

"They should try to meet a foreign student," Touhill said. "If they can make contact with another civilization and culture, they will understand how the world works. They will be richer for it."

"This is a wonderful institution. If [students] come and study hard, they will get a lot out of it. They will make friends for life."

Since UM-St. Louis has a wide variety of out-reach programs, these "friends" need not only be fellow students. Many will be professors and administration, but several will be St. Louis, or even world, community members.

Attesting to her commitment to diversity and understanding, Touhill was recognized by the Urban League, the Ethical Society, Dr. Martin Luther King Jr. State Celebrations Commission and the Conference of Christians and Jews. In 1997, Touhill was honored as the first female presented with the St. Louis Citizen of the Year Award.

Touhill said her favorite part of her job is "the variety of people I meet. It's the true mixing of society because UM-St. Louis reaches out into so many areas."

Be successful at UMSL

CHARLES D. SCHMITZ
Dean of the College of Education

In college, just like everywhere else, people are always looking for ways to get ahead. While there is no magic formula for a quick and easy path to a successful college career, there are some basic steps that will make the process easier.

Don't skip the first week

It's bad enough to miss class during the semester, but you especially don't want to be absent during the first week. Students who don't show up for their first week of classes are dropped from the attendance sheet. Besides, if you miss class early, you start the semester behind and you might be stuck trying to catch up for the rest of the term.

Stick to the basics

If you are a new student, chances are you will change your major at least once. Unless you feel very certain about your degree program, it might be a good idea to take classes for your general education requirement first, and then come back later to work on special requirements for your degree. Your adviser can offer more suggestions to help you get what you want out of your experience here with us.

Make use of helpful services

UM-St. Louis provides excellent advising services, helping students choose and pursue both a degree, and a career. Tutoring services are available to help with those tough classes. All of these things are there, so why not make the most of it?

Belong to something

Academics are the focus, but college is about more than just books. With hundreds of extracurricular activities, UM-St. Louis has something for everyone. Being a part of something outside of your classes can really enhance your time at the University.

Know when to cut your losses

Dropping classes is another habit you don't want to get into, but sometimes you are better off getting out while you can. Whatever the reason, failing a class hurts your GPA, not to mention it leaves you with a lousy feeling afterwards. Don't run away each time a class gets challenging, but don't be afraid to drop a class if you need to.

If you do drop

Make sure you go about it in the prescribed way. Talk to the professor and let them know what's going on. Most professors are very understanding about these kinds of things, and

there are steps you need to take to officially withdraw from a class. Do not simply stop going to class and assume the professor will drop you. That causes more trouble for you and the professor than either of you wants to even think about. If you drop a class early, you can get part of your fees back, so check with the registration office.

Schedule your study time

Treat your studies like the serious endeavor they are. Let's face it: going to college is expensive, not just financially, but also in terms of the time and effort you put in. You owe it to yourself to do well. Take some time to sit down and think about your classes and what you need to do for each of them.

College is 'real life'

Advisers, professors and friends can help you a lot, but you have to take the initiative for yourself. Many people talk about getting out of school and into "real life." Well guess what—real life is here, now, and there's no time like the present for getting started. Find your way around early. Know the rules, know the curriculum, know what your professors expect, and know what opportunities are available to you. Then get out there and work hard, and you will impress the people around you. You'll impress yourself, too.



File Photo/ The Current

UM-St. Louis offers a prepaid pass program for students through the Bi-State Development Agency. Current students may ride for free on all MetroLink and Bi-State buses in metropolitan St. Louis, when classes are in session.

International Studies Center helps to create campus diversity

BY SARA PORTER
Senior Writer

One thing that University of Missouri-St. Louis prides itself on is that it is a diverse campus. International students make up a large portion of the campus's population and many classes cover different languages, literatures and cultures.

The campus also has the Center for International Studies, a center meant to help international and American students better understand the world around them. Located in room 304 in the Social Sciences Building, the Center was originally founded in 1968 to help professors with research. Currently, the CIS helps international students with issues relating to America and studying at an American university, hosts a performing arts and lecture series, sponsors professorships in different areas and various other programs.

The Center is linked to universities around the world and has exchanged students, professors and research with many of them. Center Director Joel Glassman said in a previous interview that diversity and studying the world around us is very important for survival in a global com-

munity.

"In a large, changing environment, the question of whether you will have a job that requires international connections is not an option. The world's environment is going to be increasingly global," Glassman said.

To help in this global environment, the Center's programs involve such services as helping international students with everything from immigration issues to counseling for social problems.

The CIS also provides many opportunities for American students to study and work abroad. Study Abroad Coordinator Pamyla Yates once described studying abroad as a "range of opportunities."

"[Studying abroad] allows students to make progress towards an accredited plan and explore other cultures and countries," Yates said.

The Study Abroad program features opportunities in countries in Europe, Asia, Australia, Africa, South America, North America and the Pacific Islands. It also features internships, particularly the Missouri London Program, which provides students an opportunity to intern in London.

Besides the programs, the CIS also hosts lectures and concerts. Their yearly

"Human Rights in the Global Perspective" lecture is highly attended and features such high profile speakers as Dr. Roberta Cohen of the Brookings Institute and Danilo Turk, Secretary General of the United Nations.

The Center also helps host a series of dinners featuring meals from India, Japan, Spain and other countries, as well as an International Week in April, which features a fashion show, games, dinners and events spotlighting the many cultural groups present at the University.

One of the higher profile events of the CIS is their International Performing Arts Series, which features Irish, Greek, Japanese, African and Chinese musicians and entertainers.

Over the past year, the Performing Arts series has welcomed The Muungano National Choir from Kenya, the Tonda Bunraku Puppet theatre of Japan, The Kilfenora Ceili Band from Ireland, Minias Minolis and the Greek Ensemble and more.

The Jefferson Smurfit Irish Program has also hosted a series of events featuring readings by writers such as Mary O'Malley, Louis De Paor and James Liddy, along with musicians such as the Dorians and Lary Kirwan.

INDEX

Section A

Section B

Bulletin Board	2A	Alternative Theater Choices	2B
Parking Survival Guide	5A	The Fox	3B
Campus Map	6&7A	U-City	4B
My Gateway	8A	Soulard & Laclède's Landing	5B
Sports	10A	MetroLink	6B
Classifieds	11A	Film Festivals	8B
A Parrot Says	11A	Dining Out	9B

Editorial note:

This issue of *The Current* is in lieu of the annual *Downstream Tributary*. The purpose of this issue is to help new students become familiar with the UM-St. Louis campus and surrounding communities.

Bulletin Board

Put it on the Board:
 The Current Events Bulletin Board is a service provided free of charge to all student organizations, University departments and divisions. Deadline for submissions to The Current Events Bulletin Board is 5:00 p.m. every Thursday before publication. Space consideration is given to student organizations and is on a first-come, first-serve basis. We suggest all postings be submitted at least two weeks prior to the event. Send submissions to: Editor's Desk, 388 MSC, Natural Bridge Rd., St. Louis MO 63121 or fax 516-6811.
 All listings use 516 prefixes unless otherwise indicated.

The Current

- Stanford Griffith** • Editor-in-Chief
Anne Bauer • Managing Editor
Darren Woods • Ad Director
Judi Linville • Faculty Adviser
- Mike Sherwin** • Photo Director
Catherine Marquis-Homeyer • A&E Editor
Hank Burns • Sports Editor/
 Prod. Assistant
Erik Buschardt • Web Editor
Adam Bodendieck • Copy Editor
Elliott Reed • Cartoonist
Sara Porter • A&E Associate
Candace Mangin • Prod. Associate
Jamie Kerry • Proofreader
- Staff Writers**
 Michelle Elkins, Michahlsitt,
 Ryan Meehan

388 Millennium Student Center
 8001 Natural Bridge Road
 St. Louis, Missouri 63121

Newsroom • (314) 516-5774
 Advertising • (314) 516-5316
 Business • (314) 516-5175
 Fax • (314) 516-6811

campus
 388 Millennium Student Center

email
 current@jinx.umsl.edu

website
 http://www.thecurrentonline.com

The Current is published weekly on Mondays. Advertising rates available upon request. Terms, conditions and restrictions apply. The Current, financed in part by student activities fees, is not an official publication of UM-St. Louis. The University is not responsible for the content of The Current or its policies. Commentary and columns reflect the opinion of the individual author. Unsigned editorials reflect the opinion of the majority of the editorial board. All material contained in each issue is property of The Current and may not be reprinted, reused or reproduced without the expressed, written consent of The Current. First copy free; all subsequent copies, 25 cents, available at the offices of The Current.



Get your name in this box.

Apply for a job at The Current. Call 516-5714 for more information. Or submit your cover letter and resume to 388 MSC.

Fall 2002 Academic Calendar

Classes begin 8 a.m.	Wednesday	Aug. 21
Labor Day Holiday begins 5 p.m.	Saturday	Aug. 31
Classes resume 8 a.m.	Tuesday	Sept. 3
Thanksgiving Holiday begins 11 p.m.	Tuesday	Nov. 26
Classes resume 8 a.m.	Monday	Dec. 2
Classes end 11 p.m.	Monday	Dec. 9
Intensive Study Days	Tuesday and Wednesday	Dec. 10 & 11
Final Examinations Begin	Thursday	Dec. 12
Fall Semester Closes End of Day	Friday	Dec. 20
Fall Commencement	Sunday	Jan. 12

July
Fri 19
Transfer students orientation day
 Transfer student orientation day will be held from 8 a.m. to 2 p.m.

Tues 23, Wed 24 & Thur 25
Freshman students orientation days
 Students can choose which day they want to attend. The orientations will be held from 8 a.m. to 12 p.m.

August
Fri 2
Career Services
 A job search strategies workshop will be held in 327 of the MSC from 2-3 p.m. Call Career Services at x5111 for more info.

Mon 5
Career Services
 An interviewing techniques workshop will be in 327 of the MSC. Learn how to have a successful interview by polishing your skills to impress employers. The workshop is free and lasts one hour.

Thur 8
Teacher Job Fair
 The UM-St. Louis Teacher Job Fair will be held from 9 a.m. - 1 p.m. in the Mark Twain Building. For more information call 516-5111.

Mon 12
Orientation day for all new students
 Orientation for all new students will be held today from 8 a.m. until noon.

Thur 15 & Fri 16
Teaching Assistant Workshops
 Workshops and orientation for teaching assistants will be held in 218 of SSB.

Fri 16, Sat 17, Mon 19 & Tues 20
New Part-time Faculty Orientation
 Orientation for new part-time faculty will be held on Friday, August 16 from 12:30 - 2 p.m. in 132 of SSB, on Saturday, August 17, from 9 a.m. to 11 a.m. in 132 SSB, on Monday, August 19, from 8 - 5 p.m. in 132 SSB and on Tuesday, August 20 from 8 a.m. - 4 p.m. in 003 CCB.

FREE TEST, with immediate results, detects pregnancy 10 days after it begins.
 PROFESSIONAL COUNSELING & ASSISTANCE.
 All services are free and confidential.



You Are Not Alone.

Pregnant?

Brentwood... (314) 962-5300 St. Charles... (636) 724-1200
 Ballwin... (636) 227-2266 South City... (314) 962-3653
 Bridgeton... (636) 227-8775 Midtown... (636) 946-4900

All Toll Free Numbers (After Hours: 1-800-550-4900)
www.birthrightstlouis.org

Need Design work?

• LOOK NO FURTHER •

logos, flyers, posters, programs
 brochures, newsletters,
 business letterhead
 and other business documents

This newspaper's in-house designer of graphics, pages and advertising is offering his services for freelance work.

Contact HANK BURNS
 e-mail • HFLB4@juno.com • phone • (314) 706-8890

ALPHA-OMEGA Thrifty Shop
 (314) 521-2994

7974 Florissant Road
 St. Louis, MO 63121

STORE HOURS
 Monday - Friday
 1:45 p.m. - 6 p.m.
 (Closed Tuesday)

Saturday
 10:30 a.m. - 6 p.m.



Turnberry Place

Stop Renting... Start Enjoying

Every month you send another check for hundreds or even thousands of dollars to your landlord.
 When you buy a home, you are investing in your future.

Move in for as little as 3% down and only \$890 a month!

Among the many amenities for you to enjoy at Turnberry Gardens are:

- Maintenance-Free Lifestyle
- Private Pool
- All Kitchen Appliances Included
- Reserved, Covered Parking Available

For more information, please call or visit
 Susie Merten
 636-441-8787
www.taylormorelyhomes.com




*Prices are subject to change without notice.
 *Financing example based on a sale price of \$115,000 and a FHA 1 year AFM at 5.25%



TIMBER FURNITURE & MORE

ATTENTION! ALL STUDENTS

Your AFFORDABLE FURNITURE Headquarters featuring...

SAUDER O'SULLIVAN

We can answer all your apartment or dorm needs

Large selection of Ready-To-Assemble Furniture

COMPUTER / HOME OFFICE



\$99.99
 COMPUTER DESK W/ HUTCH
 Fruitwood Finish
 Model # 1342-110

BEDROOM FURNITURE



\$149.99
 DRESSER
 Fruitwood Finish
 Six drawers with metal runners
 Model # 1316-110
 Mirror # 1310-110 \$49.99

HOME ENTERTAINMENT



\$79.99
 ENTERTAINMENT CENTER
 Fruitwood Finish
 Holds most 27" TVs
 Model # 1359-110

We accept




Hurry In!
Sale ends September 14, 2002

8100 Watson Road
St. Louis, MO 63119
Phone: (314) 842-8408
<http://www.timberfurn.com>

HOURS: Monday thru Saturday - 10 am to 7 pm
Sunday - 12 pm to 5 pm

Need help with your studies?

Center for Academic Development offers year-round labs, tutors and more

ANNE BAUER
Managing Editor

Throughout the school year and during the summer, the UM-St. Louis Center for Academic Development provides services for students to help them reach their academic goals. On-campus tutors in various subjects, study sessions and math and writing labs are available to help students with introductory to senior level and higher courses.

The two main goals of the center are to provide academic support and to implement campus assessment said Director of the Center for Academic Support Don Mertz. Academic support is provided for students through the labs, tutors and study sessions. Here is some general information about some of the service the Center for Academic Development provides.

Math Lab

The Math Lab, in room 425 of the Social Sciences Building, offers walk-in help to students studying any level of math. A minimum of two tutors are in the lab at all times. All tutors that work in the lab are required to take up to Calculus III; some of the tutors are Masters and Doctoral students in math and can help students at those levels.

"The lab mostly helps students who, when working on their homework, encounter problems. We instruct the tutors to not do their homework but [to] help them with the steps to solve the problem," Mertz said.

In addition, the Center for Academic Development offers pre-collegiate workshops for students in beginning and intermediate algebra. The workshops are a semester long and the fee for the classes is less than general tuition. Passing a beginning or intermediate algebra workshop allows students to move on to the next level of math needed. There is no credit given for the workshop.

Writing Lab

The Writing Lab, room 409 of the Social Sciences Building, assists students with papers for classes. Tutors on duty are capable of helping both undergraduate and graduate students. Tutors can help students with sentence clarity, development, grammar, usage and other aspects of writing.

Study Sessions (SI)

Another division of the center is Supplemental Instruction [SI]. Student tutors, paid by the University, sit in on various classes and hold study sessions outside of class to help students understand

the information taught during the lecture.

"They [the tutors] are paid to attend the class and then reinforce and explain what is taught in the class, and they review for tests," Mertz said.

Which classes have supplemental instructors is dependent on student's willingness to hold the sessions.

"We invite professors of certain classes to give us names of students [who] have done well in the class in the past. We try to attract SI leaders to classes with large enrollments, multiple sessions and courses students traditionally have had trouble with in the past," Mertz said.

Once an SI instructor chooses a class, usually the class is poled to see when the most students are available to meet, and from there, the study sessions are scheduled.

For a list of SI courses, call 516-5194.

Tutor Referral Service

The Tutor Referral Service is another way for students to receive help in courses. This service is different from Supplemental Instruction in that the tutors are paid by the students and work one-on-one.

"Departments are responsible for generating a list of students who are willing to tutor. They send the

names back to us, and we post them on the web," Mertz said.

Once the tutors names and phone numbers are posted on the Web, it is up to the students to call the tutor, set-up a time to meet and arrange payment. The tutor referral service can be accessed only through computers on the UM-St. Louis campus or a computer equipped with a University dial-up connection.

Required testing and assessment

Aside from helping students with classes the center handles required state assessment. All freshmen and graduating seniors are required to take the Academic Profile, which tests student's general educational development. The test is free, takes approximately 60 minutes and does not affect student's GPA or academic standing. Dates and times for testing are available on the UM-St. Louis homepage at <http://www.umsl.edu/services/cad/amen-thp.html>.

For more information on these programs contact the center at 516-5194. Also, Mertz says that students should remember to check the UM-St. Louis web site for information and for students to check their University email on a regular basis for notices.

Center for Academic Development
(314) 516-5194

Main office: 507 Tower

Math Lab (425 SSB) hours (Fall 2002)

Monday	8:30 a.m. to 8:30 p.m.
Tuesday	9:00 a.m. to 7:00 p.m.
Wednesday	8:30 a.m. to 8:30 p.m.
Thursday	8:30 a.m. to 8:30 p.m.
Friday	9:00 a.m. to 1:00 p.m.
Saturday	Closed
Sunday	1:00 p.m. to 5:00 p.m.

(Hours subject to change)

Writing Lab (409 SSB) hours (Fall 2002)

Monday	10:00 a.m. to 7:00 p.m.
Tuesday	10:00 a.m. to 7:00 p.m.
Wednesday	10:00 a.m. to 7:00 p.m.
Thursday	10:00 a.m. to 7:00 p.m.
Friday	10:00 a.m. to 2:00 p.m.
Saturday	Closed
Sunday	1:00 p.m. to 5:00 p.m.

(Hours subject to change)

Student Activities hosts a range of events on and off campus

One of the most interesting things you will discover when you arrive on our campus is the quality of its student life. It has been our pleasure to work with a variety of students here at UM-St. Louis over the past years. Few people outside of the University think of UM-St. Louis as having a large and active student body. However, UM-St. Louis sponsors over 500 activities, both on and off campus, and has over 100 organizations from which students can choose to participate. A few examples of our organizations include social

Greek, professional organizations, international groups and many others.

Being a part of student life on campus is a key element to having a truly excellent college experience that many incoming students are unaware of. Not only will you be able to meet new people and participate in fun activities, you can often learn new things about yourself and others. That is why we want to encourage all new and returning students to take some time to check out what UM-St. Louis has to offer. With over 100 different organizations and

clubs to choose from, you are bound to find something that suits you.

The Office of Student Activities also offers opportunities to be a part of various activities throughout the St. Louis metropolitan region. We offer discounted ticket prices to various venues such as the Fox Theater, St. Louis Symphony, Six Flags and many more. There is something for everyone! Student Activities and what we offer can help make your college experience the best it can be.

-The Student Activities Staff

Need some extra cash?

Work for The Current. Staff members get paid...yes, in U.S. currency

Call 314-516-6810

The Medicine Shoppe

Sam Bae, Pharmacist / Owner

8953 Natural Bridge • St. Louis, MO 63121

(314) 428-7676

In Bel-Acres Shopping Center, East of Natural Bridge & I-170

Open Mon. - Fri. 9:30 - 6 p.m.
Sat. 9:30 - 2 p.m.

Facsimile (314) 428-1701
Business Pager (314) 988-2207

Refills Online
1216@medicineshoppe.com

Have A Question? E-Mail The Pharmacist
10% Discount w/Valid Student ID
What A Pharmacy Was Meant To Be®

Traffic Tickets?

DUI? DWI? WARRANTS?

Suspended or Revoked?

Fees as low as **\$35**



David M. Diamond • Attorney At Law • (314) 781-1078
Traffic Law • Personal Injury • Criminal Law • General Practice

GOODY GOODY DINER

A St. Louis Tradition For Over 50 Years

B.Y.O.A.
[Bring Your Own Appetite.]

We're Worth the Trip Off Campus!

BREAKFAST (ALL DAY) & LUNCH

DAILY LUNCH SPECIALS • CARRY-OUT AVAILABLE
BOX LUNCHES AVAILABLE FOR 5 OR MORE
MAJOR CREDIT CARDS WELCOME

www.goodygoodydiner.com



MONDAY THROUGH FRIDAY: 6 A.M. TO 2 P.M.
SATURDAY: 7 A.M. TO 2 P.M.

5900 Natural Bridge • 314-383-3333



Follow these signs to success!

Sunday, August 18
 Ships Ahoy Picnic
 5:00 p.m. - 7:00 p.m.

Students, parents, friends, faculty and staff are welcome to attend this welcome picnic while enjoying music, free food, a petting zoo, clowns, face painting and other activities!

Wednesday, August 21
 Wednesday Noon Live
 11:30 a.m. - 1:00 p.m.

Take a relaxing lunch in the "PILOT HOUSE" and listen to the sounds of your favorite local band

Thursday, August 22
 Shaved Ice with the Administrators
 11:30 a.m. - 1:30 p.m.

Beat the heat with your favorite administrators while enjoying a free shaved ice!

Friday, August 23
 "UMSL FEAR FACTOR"
 7:00 p.m. - 11:00 p.m.

Yeah, it's time to hit the books, but first let's get off the hook at our annual beach party. Free food, music by Q95's DJ Charlie Chan, make your own music video, enter our first ever Mr. and Mrs. UMSL Swimsuit Contest, and compete in our very own FEAR FACTOR!!

Monday, August 26
 Psychic Fair/The Mall 104.1
 11:00 a.m. - 2:00 p.m.

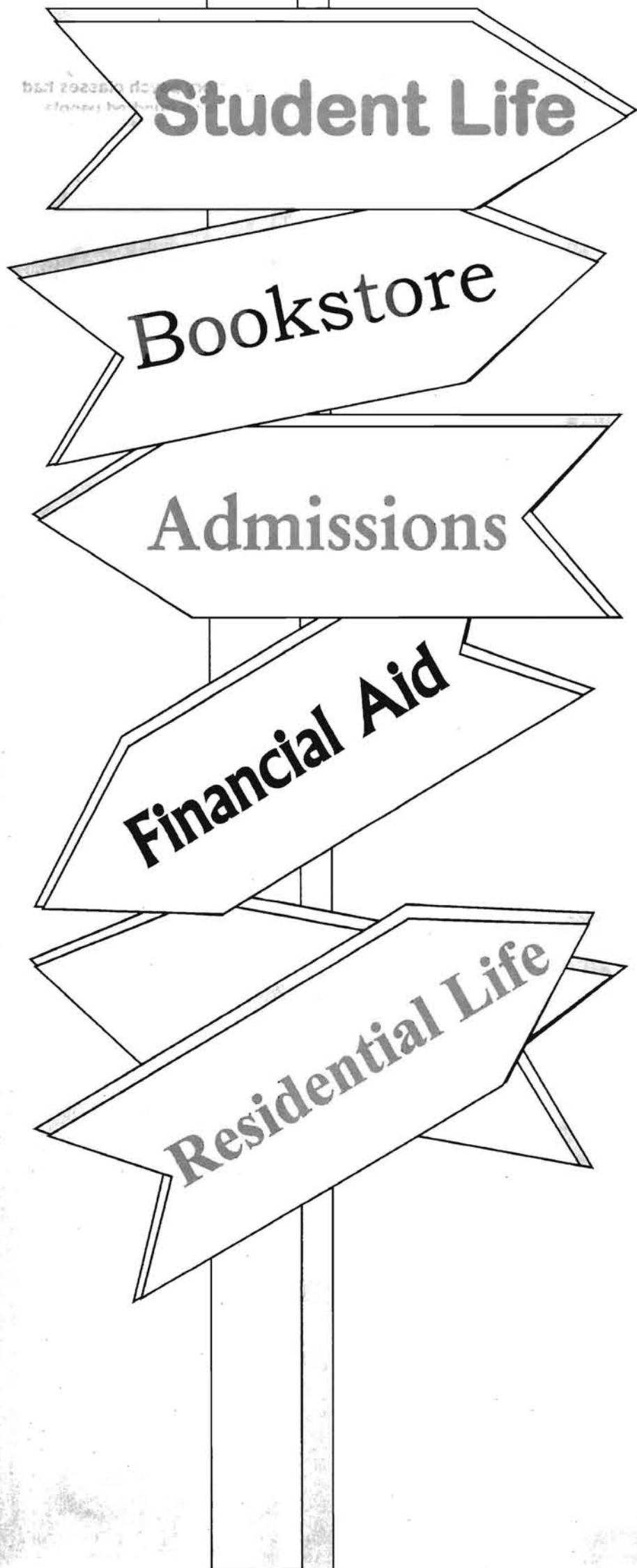
Be entertained with free music while getting your fortune told or a caricature. FREE!!

Tuesday, August 27
 REC SPORTS DAY
 11:30 a.m. - 1:30 p.m.

The celebration continues with a hole-in-one, free throw contest, dunking booths and a climbing wall. Free cotton candy and popcorn!

WEDNESDAY, AUGUST 28
 EXPO
 11:00 a.m. - 2:00 p.m.

COME AND GET INFORMATION ON STUDENT ORGANIZATIONS AND CAMPUS DEPARTMENTS



Parking Survival at UMSL 101

GARY CLARK

UM-St. Louis Police Department

Where can I park? Do I need a permit? Where do I put the permit? My class starts in 10 minutes and there are no parking spaces! Those frustrations are similar to any student attending a university campus. Parking confusion and tickets don't have to be a part of your university experience. Take a look at some parking tactics and inside tips from the UM-St. Louis Police to avoid those parking hassles.

If you would like additional information, contact the UM-St. Louis Police at 516-5155 or stop by the station located at #1 Mark Twain Drive by the Metrolink North Station. The station is open 24 hours and provides emergency vehicle service in the event of breakdowns or lockouts. The police station also provides information on crime prevention.

Before you start

Give yourself plenty of drive time. Allow for slack time for traffic snarls and highway construction delays. Arriving early gives you a first choice for prime parking spots, cappuccino at the NOSH, or pre-class study time.

While it may seem like no parking is available, there are actually plenty of spaces at UM-St. Louis. But just like a trip to the shopping center, the early birds tend to get the closest

spaces. Improvements are in the works to make things easier, including construction of new garages and replacement of existing parking signs, all in an attempt to make the process easier.

When planning what time to leave, keep in mind the distance from your car to your class. Average walking time from most spaces is only about five minutes.

Another way to streamline your schedule is to familiarize yourself with the free shuttle services. This saves walking time and lets you avoid having to re-park you car for classes at other campus locations.

Where to Park

Student parking is designated by blue signs that read Student Parking Only. Faculty staff areas are marked by red signs that read Faculty/Staff Parking. Faculty/Staff parking areas are designated Student parking after 4:30 pm. Visitor parking areas are for visitors only. Students may park at any parking space (except for handicapped) from 5:00 pm Friday until 7:00 am Monday. Permits are not required for weekend parking.

Permits

A parking permit must be displayed on all student vehicles. Permits are good for one semester and are available at the Cashier's Office at a fee of \$20.00 per credit hour. Daily parking permits are available at the UM-St. Louis Police

Station for those vehicles that are not displaying a semester parking permit. If you have a semester permit, you may obtain a daily permit for free. Otherwise the charge for a daily permit is \$10.00.

Display of Permits

Permits are to be displayed on the left side of the vehicle's rear window. Convertibles, station wagons and trucks are required to display the permit on the right hand side of the front window and it must be affixed to the outside window. The permit cannot be moved from car to car taped to the inside windows, or placed on the rear deck or dashboard of the car. Students using a different car can receive a free temporary permit obtained from the UM-St. Louis Police Station.

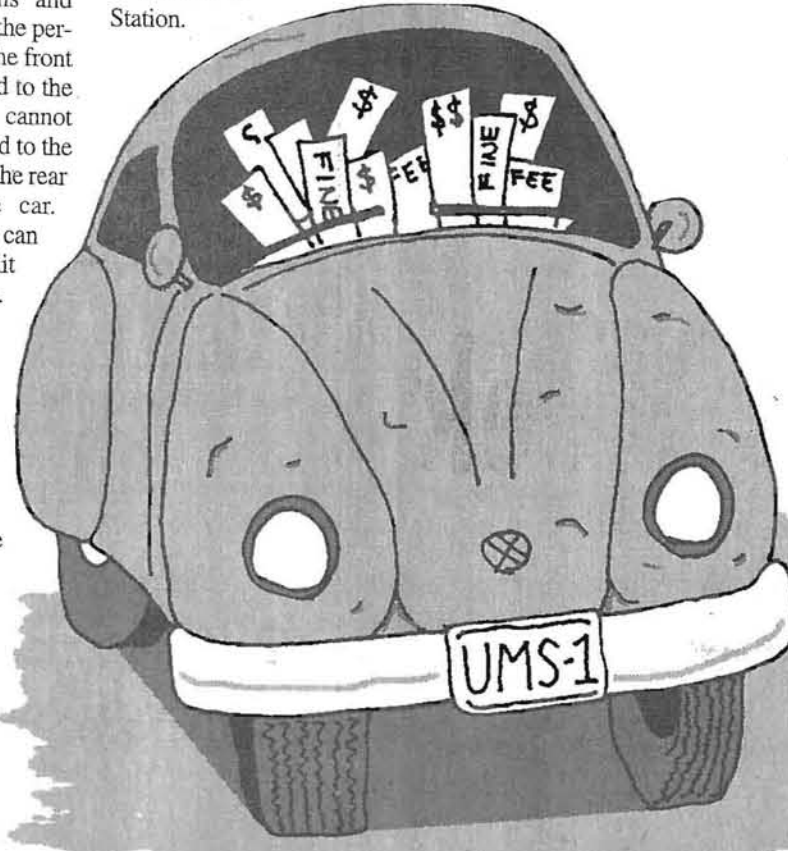
Handicapped Parking

Vehicles parking in handicapped spaces must display a State of Missouri handicapped hang tag, license plates and an UM-St. Louis handicapped-parking permit authorized by the University Health Services. Call 516-5671 for more information.

Illegally Parked Vehicles

A student vehicle parked

in a faculty/staff, visitor or service vehicle space or a vehicle that does not properly display a semester or daily parking permit is considered illegally parked and may be ticketed. Tickets are to be paid at the Cashier's Office, but an appeal process is available through the Traffic Appeals Committee. Appeal forms are available at the UM-St. Louis Police Station.



Under Current

by Mike Sherwin
Photography Director

What was your first impression of UMSL



David Yan
MOSTARS Participant

"I like the design of the campus. The facilities are great, but it's so loud with all the planes overhead."



Estera Lucas
Senior/Psychology

"I remember thinking it was so big! It took way too long to get from class to class sometimes."



Nooshi Ghasedi
Junior/Economics

"It was great...Everyone was really friendly."



Jennifer Sherwin
Psychology/French

"Well, my high school had only 250 students, so it was a total shock. One of my introductory psych classes had over a hundred people."

When you're ready to excel in Personal Finance 101, enroll in the right bank.



Welcome to UMB.

- Write 20 free checks a month
- Free Ultra ATM card or free Ultra II Visa check card*
- Free ATM transactions at all UMB Bank Ultra ATMs (More than 400 statewide)
- Internet Banking through OnLine Direct

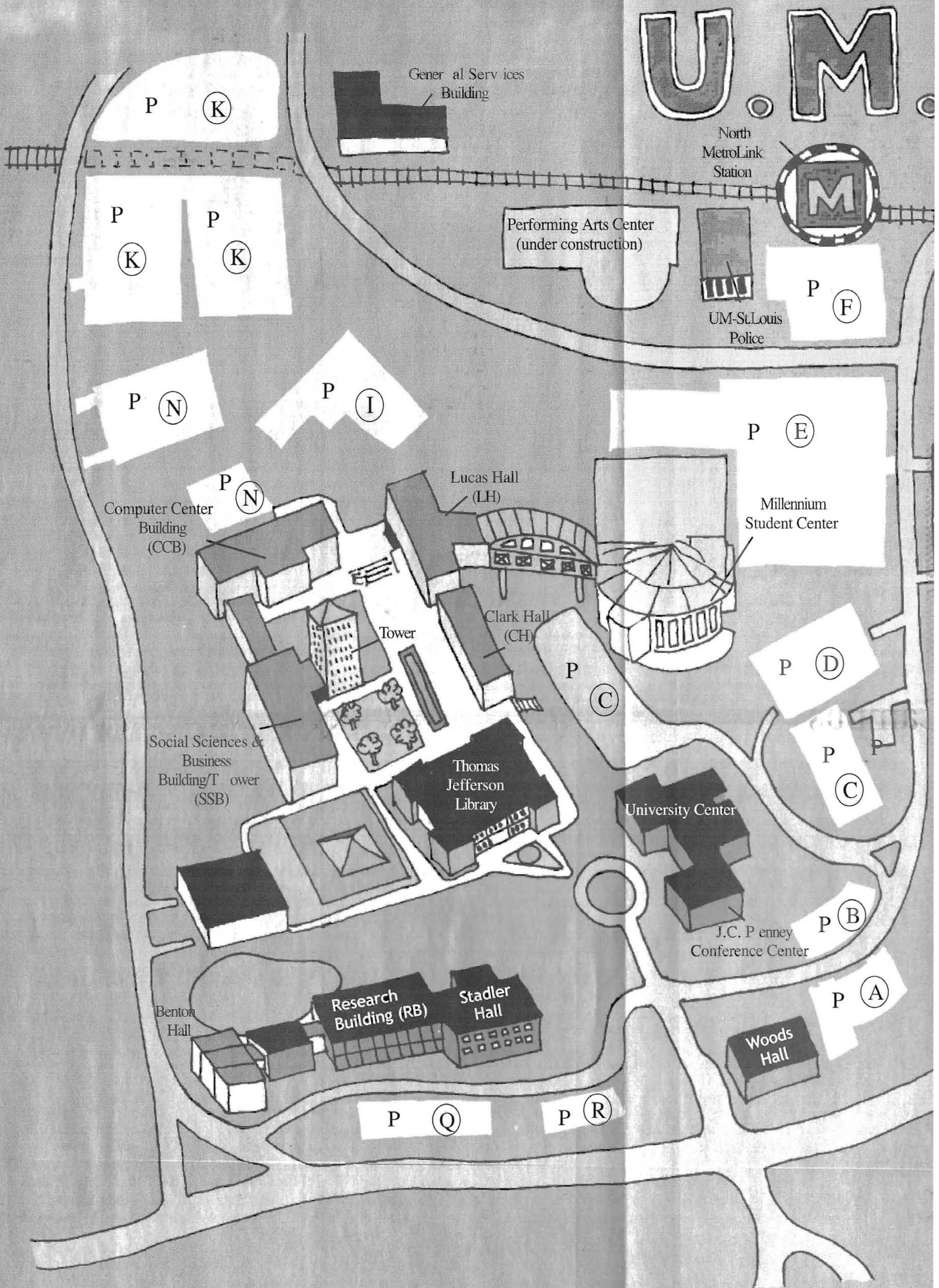
Millennium Center • 314-612-8699



*UMB is a registered service mark of UMB Financial Corporation. Member FDIC

umb.com

*Based upon approval. Minimum deposit of \$50 to open account



(P) Parking Facilities

Description	Lot
Students	CDEFKNSTUVY
Faculty/Staff	ACFNQRSVWX
Visitors	ABCFNSWX
Accessible	ACEFNQSVX
Service Vehicles	AMNR
Cycles	CDNU
Car Pool/Continuing Education	C

You are bound to go

STANFORD GRIFFITH
Editor-in-Chief

If you spend enough time on campus, you are bound to get hungry. UM-St. Louis has some options besides "brown-bagging-it."

For those new at the on-campus food hunt, here is some advice: Watch the hours of each of the following options closely, as they are strictly enforced. Do not expect to find much beyond a candy bar after 7:30 p.m. though. Be sure to

bring cash, as none of these choices accepts credit cards or debit cards of any kind, nor do they accept checks. Now, on campus are soda refills free. Ice is free either. All on-campus at UM-St. Louis food services are provided by Chartwells.

The Nosh is located on the first floor of the Millennium Student Center, offers the typical cafeteria selection of grill with hamburgers and similar fare. The salad bar is also an available option. A small international selection of T

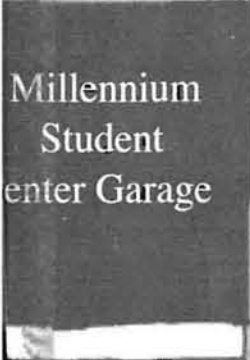
S.L.



Fine Arts Building/Expansion



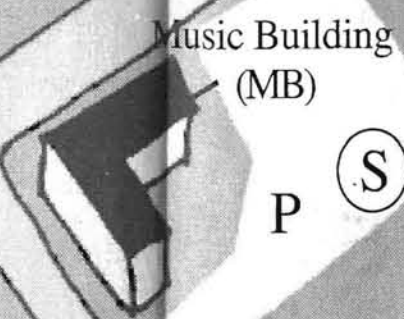
Future Garage



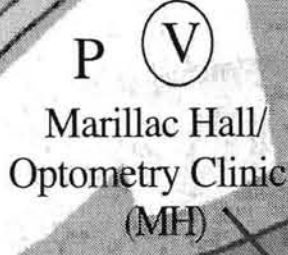
Millennium Student Center Garage

North Campus

South Campus



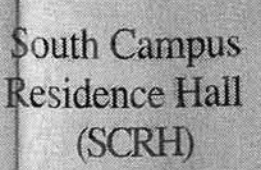
Music Building (MB)



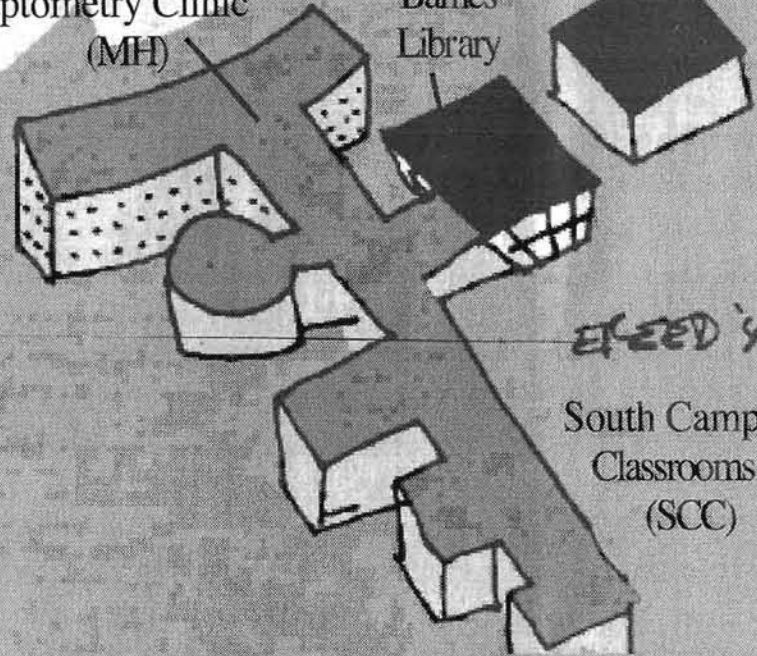
Marillac Hall/Optometry Clinic (MH)



Barnes Library



South Campus Residence Hall (SCRH)



South Campus Classrooms (SCC)



hungry while here

Mex and pseudo-Asian rotates every two weeks. Adeli also offers a variety of sandwiches.

Located on the second floor of the MSC, the C-Store is basically a gas station without the gas and gross bathrooms. The U-Mart in Marillac Hall on South Campus is another convenience store located on campus. They sell hotdogs, pretzels, chips, candy and non-alcoholic beverages.

Aroma's is directly across from the C-Store. While its menu and selections

seems to be in constant transition, the café consistently offers a wide range of coffees and teas. At times it also sells sandwiches, salads, wraps, pastries and desserts.

The Pony Express also serves coffees, sandwiches, salads and pastries. It has two locations: the Social Sciences Building (SSB) and the Research Building. These are usually a good place to get a quick something between classes.

Soda and snack machines also are available throughout campus, including right in front of *The Current*.

* Editorial note:

This is not a complete map of the UM-St. Louis campus. Buildings, lots, etc., are not all to proportion.

Getting & using My Gateway

An intro . . .

BY PAM KAISER-LEE
Student Affairs Division

Getting started

To access any of your computer accounts, you will need to obtain your "GatewayID," a name that is unique to every student, faculty and staff member at UM-St. Louis. Your GatewayID will remain with you during the time that you are a student at UM-St. Louis. To find out your Gateway ID, you must visit the following web address: <http://gatewayid.umsl.edu>, from a computer on campus.

Once you know your GatewayID, you will be able to access various accounts that are created for you on the first day of classes. If you register late, it could take up to two weeks for your accounts to be created.

Passwords

Default passwords for GatewayIDs and student e-mail have been created using a combination of birth date and social security number. If you do not have a social security number (e.g. foreign students), your default password was created using the last four digits of your student number. The format of the new password is yydd9999 where yy = year of birth
dd = date of birth
9999 = last 4 digits of SSN

Example: if Jane Doe's birth date was 10/24/80 and SSN was 123-45-6789, her password would be 80246789.

Student E-mail

All currently registered students have student e-mail accounts on the e-mail server studentmail.umsl.edu. The default size of all student e-mail accounts is 10 megabytes. Student e-mail is designed for the distribution of UM-St. Louis official email.

To access your student e-mail, go to the following web address in any browser: <http://studentmail.umsl.edu>. You will be prompted to log in with your GatewayID and password.

Student e-mail addresses are: yourgatewayid@studentmail.umsl.edu, where "yourgatewayid" is your personal GatewayID.

For example, if your GatewayID is abc123 then your student e-mail address will be:

abc123@studentmail.umsl.edu

To obtain your Gateway ID, go to the following web address: <http://gatewayid.umsl.edu>.

The easiest way to check your student e-mail from anywhere in the world is to go to this web address: <http://studentmail.umsl.edu>, and login using your GatewayID and password.

If you have a private e-mail address and would like to have your student e-

mail automatically forwarded to this address, there are a couple of steps to take to get this set up. There is a form available at the front desk in the SSB 103 Lab or the TJ Library Lab. You must present your Student ID when you turn in the completed form to set up this forwarding service.

On your home or work computer, you can configure various e-mail client software packages (e.g. Outlook Express, Eudora) to work with your student e-mail account. However, we recommend that you use the web-based environment (<http://studentmail.umsl.edu>) as often as possible to check your student e-mail from both on and off campus.

Final notes

Please note that it takes three to four business days for newly registered students to be fully integrated into the campus systems. GatewayIDs may show up immediately, but student e-mail accounts could take a few days to be fully established.

For more details

For more information on the MyGateway system, consult the Information Technology Services web site at <http://www.umsl.edu/technology> or call the Technology Support Center at (314) 516-6034.

Going further . . .

BY PAM KAISER-LEE
Student Affairs Division

"MyGateway" is an online course management system that was introduced at UM-St. Louis at the beginning of the Fall 2000 semester. MyGateway provides all students and faculty with access to course materials, and a variety of programs that enable classroom communication and interaction using virtually any computer with a current web browser and an Internet connection.

MyGateway provides students with access to a course's online resources, and many other features, such as class e-mail, discussion forums, virtual chat, an address book, a calendar and task list and a variety of other Internet resources.

To log on to MyGateway, go to the following web page: <http://mygateway.umsl.edu>. This will bring you to the login page. Click "Login" and enter your GatewayID and password. You can look up your GatewayID and password at the following web address: <http://gatewayid.umsl.edu>.

After logging on to the MyGateway system, you will be brought to your personal MyGateway welcome page. This page is your starting point for accessing many features of the MyGateway system, your classes at UM-St. Louis, and a variety of

other campus based resources, including your official class schedule, your end of semester grades and your student e-mail account.

The "Tools" area will allow you to make entries in your personal calendar, task list, and address book, search for other users and send e-mail to other members of your class.

The "My Announcements" area will allow you to check important announcements for each of your classes.

The "My Courses" area will list all of your classes and will allow you to click on an individual class name and access information specific to that class.

Within "My Courses," the first page displayed is "Announcements" for that course. Here you will see all class related announcements, including the availability of online progress evaluations and other class related news. The buttons on the left-hand side of the screen give you access to many items. Please note that the information available, the way it is organized and the specific features available will depend upon the needs and interests of the instructor for the course. Click on:

- Course Information to view items such as syllabus, grading policies, etc.
- Staff Information to view items such as contact information for your

course instructor and teaching assistants.

- Course Documents to view items such as lecture notes, virtual handouts, study guides and relevant class materials.

- Assignments to view items such as reading assignments, writing projects and quizzes.

- Communication to view items such as the class e-mail utility, access to student web pages, the class discussion board for online discussions, Group Pages (available to any group of students who wish to work and study together online), a student roster and the virtual chat program for synchronous online chat.

- External Links to view items such as class-related web sites and other general Internet resources.

- Tools to view items such as a "Digital Drop Box" for submitting written work (please ask your instructor for the appropriate document format to use when submitting papers this way), "Check Grade" gives you access to your current class grades, your calendar, a class web page editing utility you can create a personal web page (the rest of the class can access) and a student manual that will tell you more about the My Gateway system.

There is also an "Electric Blackboard" that enables you to take and keep online class notes.

Registering for classes, getting your grades, etc. . . .

There are several ways to register for classes, add and drop classes from your schedule, and pay your fees:

1) in person at the Registration Office on the 2nd floor of the Millennium Student Center or in the Dean's Office of your college.

2) at your Dean's Office - Undergraduate students may register in their college Dean's office with the help of an advisor. Just call your advisor for an appointment.

3) by calling the Touch Tone Registration and Inquiry Network (TRAIN) at (314) 516-7000 on a touch-tone phone.

On TRAIN, you can

- see if a course is open
- register for classes
- find out your grades
- find out and pay your fees with a credit card

4) By using the Student Terminal Access and Registration (STAR) from a PC in your home or from a campus computer lab or classroom.

STAR has all the features of TRAIN, plus you can

- change your address
- order a transcript
- create a degree audit report

To save printing and postage

costs, the four campuses of the University of Missouri System ceased distribution of grade reports to students via U.S. postal mail during Fall 2001.

Four options offer students convenient ways to obtain their final course grades at the completion of each semester and their class schedules at the beginning of the semester.

1) The Office of the Registrar's Web Site: <http://www.umsl.edu/~register>. (You must know your GatewayID and password to log in to the secure pages.)

2) MyGateway: There is an

icon for "Grades and Schedules" at the top of the "Welcome" screen once you have logged in to MyGateway (<http://mygateway.umsl.edu>).

3) Student Access to Records at UM-St. Louis (S.T.A.R.): STAR is available through the Registration & Records web site (<http://www.umsl.edu/~register/star.htm>).

4) Touch Tone Registration and Inquiry Network (T.R.A.I.N.): TRAIN is available from any touch-tone telephone, by calling (314) 516-7000, option 4.

The advantage of accessing

grades electronically is that it allows you to see your grade immediately after it is recorded by your instructor. An official, printed copy of your grade report is available upon request at no additional charge. The official copy must be requested by you and is mailed to your official address of record when it becomes available, usually two to three weeks after the semester closes. Requests for your grade report may be made by phone, mail, e-mail, fax or in person.

To access your grades and schedule through the Office of the Registrar's Web Site, you must know your GatewayID. You can obtain this

by going to the following web address: <http://gatewayid.umsl.edu>.

To access STAR or TRAIN, you must know your student number and personal identification number (PIN). If you need assistance with your PIN, you should come to the Office of the Registrar, at 269 Millennium Student Center with photo identification. For security reasons, you cannot obtain or change your PIN over the telephone.

For more information on accessing your student records, consult the Office of the Registrar's web site at <http://www.umsl.edu/~register> or call them at (314) 516-5545.

Still looking for a place to live?

Well, look no further
than

University Meadows

Close to campus. Private bedrooms. Free cable. Free internet access. Free parking. On-site laundry facility.

Gated community

... and more of the same.

516-7500

Umeadows@go.com

<http://www.campushousing.com/umsl>



Get ready for

Campus Connections

*Your one and only telephone book for
the University of Missouri-St. Louis*

AND IT'S FREE

In it you'll find

Phone numbers to fellow classmates

Information about the more than one hundred student organizations on campus

Emergency phone numbers

Other information regarding area businesses and departments on campus

The list goes on!

Campus Connections is a must have
for all UM-St. Louis students

**Display Advertising Space
in *Campus Connections*
is now available**

So Call Now

TO PLACE YOUR AD IN CAMPUS CONNECTIONS

516-5316

If you do not want your contact information published in *Campus Connections*,
contact the Office of the Registrar in Room 269 of the Millennium Student Center, 516-5545.

SPORTS @ UMSL

Mark Twain is loaded with action



Official UM-St. Louis Mascot

UM-St. Louis's Mark Twain Recreational Center is located at the northernmost end of campus. However, there is still much to see and take part in at the center. Below is a listing of the major points of interest at the Mark Twain Center and a listing of the hours of operation for the duration of July.

First Floor -
Locker Rooms
Swimming Pool
Racquet Ball
Exercise Room
Aerobic Room

Second Floor -
Gymnasium
Athletic Offices

Third Floor -
Upper Deck Seating For Games

Outdoors -
Tennis Courts
Baseball Diamond
Soccer Field

GYM AND SOUTH BALCONY HOURS OF OPERATION

Wed., July 17 - 5 - 8:45 p.m.
Thurs., July 18 - 5 - 8:45 p.m.
Fri., July 19 - CLOSED
Sat., July 20 - 10 a.m.-6:45
Sun., July 21 - CLOSED
Mon., July 22 - 5 - 8:45 p.m.
Tues., July 23 - 5 - 8:45 p.m.
Wed., July 24 - 5 - 8:45 p.m.
Thurs., July 25 - 5 - 8:45 p.m.

CLOSED for floor refinishing for the rest of July and until Aug. 4

POOL DAILY HOURS OF OPERATION

Mon. - 11:30 - 2 / 6:30 - 8:45 p.m.
Tues. - 11 a.m. - 1 / 6:30 - 8:45 p.m.
Wed. - 11:30 - 2 / 6:30 - 8:45 p.m.
Thurs. - 11:00 - 1 / 6:30 - 8:45 p.m.
Fri. - 11:30 - 2
Sat. - 12 - 4:45 p.m.

FITNESS CENTER AND RACQUETBALL COURTS

Open Monday through Friday
6:30 a.m. - 8:45 p.m.
Open on Saturday
10 a.m. - 6:45 p.m.

ALL FACILITIES ARE CLOSED ON JULY 21, 28 AND AUGUST 4

UM-St. Louis F.Y.I. SPORTS

WINTER



Men's Basketball

Head Coach:
Mark Bernsen

2001-02 Team Stats:
10-17 record,
6-13 in conference play
68.6 Points Average
.458 Field Goal Percentage

'01-'02 Attendance:
4,403



Women's Basketball

Head Coach:
Lesia Bonee

2001-02 Team Stats:
9-17 record,
6-14 in conference play
65.9 Points Avg.

'01-'02 Attendance:
3,133

SPRING



Baseball

Head Coach:
Jim Brady

2002 Team Stats:
30-21 record,
18-11 in conference play
.296 Average
287 Total Runs Scored
443 Total Hits

'01-'02 Attendance:
2,560

Softball

Head Coach:
Lisa Bonee

2002 Team Stats:
31-25 record,
8-10 in conference play
.277 Average
226 Total Runs Scored
405 Total Hits

Men's Tennis

Head Coach:
Rick Gyllenborg

2002 Team Stats:
17-5 Record
7-1 in conference play

Key Returning Players:
Josef Clark, Junior - 11-6
Matt Valkhard, Junior - 9-5
Martin Damm, Senior - 13-5
Mario Gruden, Senior - 11-4

Soccer, volleyball teams return for 2002

With the baseball, softball and men's tennis teams' seasons having ended, it is now time for the soccer, volleyball, women's tennis and golf teams to take the field. Below is a look at the six teams in play for the fall sports season at UM-St. Louis.



Men's Soccer

Head Coach:
Dan King

2001 Team Stats:
5-10-2 record
1-7-2 in conference play
1.4 Goals Per Game
.122 Shot Percentage
24 Total Goals Scored
13 Total Assists

'01 Attendance:
1,385

Key Returning Players:
Goal Keeper Mike Brockman, Senior
1.74 Goals Against Average
.782 Saves Percentage
2-0 Record

GK Adam Barnstead, Senior
2.39 GA Avg.
.635 Saves Percentage
1-1 Record

Midfielder Kirt Spencer, Senior
4 Goals Scored
11 Total Points, Three Assists

Forward Adam Bimslager, Sophomore
9 total points, 3 Goals
3 Assists

MF Jeff Stegman, Senior
7 Total Points, 3 goals
3 Assists

MF Dave Seckman, Soph.
6 Total Points, 3 Goals

MF Nick Carron, Junior
6 Total Points, 3 Goals

Women's Soccer

Head Coach:
Beth Goetz

2001 Team Stats:
13-4-1 record
7-2-1 in conference play
2.1 Goals Per Game
.126 Shot Percentage
38 Total Goals Scored
25 Total Assists

'01 Attendance:
1,455

Key Returning Players:
F Lindsey Siemens, Senior
13 Goals, 7 Assists, 33 Points
F/MF Sonya Hauan, Soph.
7 Goals, 5 Assists, 19 Points
.184 Shot Percentage

MF Lindsay Jones, Senior
5 Goals, 2 Assists, 12 Points

GK Rebecca Senn, Senior
.75 GA Avg., 12-1 Record
.857 Saves Percentage

Volleyball

Head Coach:
Denise Silvester

2001 Team Stats:
14-17 record
7-8 in conference play
1496 Total Kills
.163 Attack Percentage
192 Aces, 1.6 Aces Per Game

'01 Attendance:
2,110

Key Returning Players:
Outside Hitter Maureen Monahan, Senior
12 Serving Aces
.25 Aces per game
662 Total Attacks

OH Daria Sak, Soph.
12 SA, .13 Aces Per Game

OH Kathryn Freeman
539 TA, 14 SA
.13 Aces Per Game

Middle Hitter Nikki Pagels
554 TA, 9 SA,
.195 Attacks Percentage

Women's Golf

Head Coach:
Craig Harbaugh

2001 Team Stats:
368.6 Average
Low - 353
High - 387
Top Finish - Seventh
Strokes 2212

Key Returning Players:
Shelby Cloyd, Sophomore

94.0 Average, Low - 88
High - 97

Amy Parmley - Senior
90.8 Average, Low - 87
High 95

Men's Golf

Head Coach:
James Trittler

2001 Team Stats:
392.3 Average
Low - 288
High - 329
Top Finish - Second
3,139 Strokes
5 Tournaments, 8 Rounds

Key Returning Players:
Scott Kirchoff, Senior
76.8 Average, Low - 72
High - 81

Kyle Szczesniak - Senior
77.2 Average, Low - 71
High - 82

Women's Tennis

Head Coach:
Rick Gyllenborg

2001 Team Stats:
6-8 record,
3-6 in conference play

Key Returning Players:
Christy Bronson, Soph.
8-4 Record

Devin Foy, Soph.
8-5 Record

Casie Skaggs, Soph. 11-2 Record

Helpful sports contact information

Athletic Department

☎ 516-5661

Recreational Sports Hotline

☎ 516-5125

Recreational Sports Office

☎ 516-5326

Racquetball Reservations

☎ 516-5125

Racquetball Office

☎ 516-6614

Men's Soccer

☎ 516-7027

Women's Soccer

☎ 516-5646

Volleyball

☎ 516-5643

WEB

www.umsl.edu/services/athletics
for the latest sports news and information

UMSL Sports HOF recognizes persons who were influential on and off the field

In 2001, UM-St. Louis established its UMSL Sports Hall-of-Fame and on June 9, 2001 the Hall-of-Fame class was inducted. This June, a class of eight was inducted. Below is a look at all 18 members of the UMSL Sports Hall-of-Fame.

2001 INDUCTEES

Judy Berres (Women's Head Coach/Athletic Director)

Bobby Bone (Men's Basketball)

Don Dallas (Men's Soccer Head Coach)

Greg Daust (Men's Basketball)

Jim Dix (Baseball Head Coach)

Jan Gettemeyer (Women's Soccer)

Gina Gregory-Bowders (Women's Basketball)

Andrew Runzi (Baseball)

Chuck Smith (Men's Basketball Head Coach/Athletic Director)

Jack Stenner (Men's Basketball)

Ted Struckmann (Athletic Trainer)

Frank Tusinski (Men's Soccer)

Lisa Houska-Dey (Women's Basketball/Softball)

Ken Hudson (Women's Soccer Head Coach)

Laurie Aldy-Kuchno (Softball/Women's Soccer)

Chris Pilz (Men's Basketball)

Gregg Ready (Baseball)

Jeff Robben (Men's Soccer)

Barbara Schorp (Administrative Assistant)

Rita Scott (Women's Basketball Head Coach)

The establishment of a Sports Hall of Fame came from a joint Alumni-Athletic Task Force.

What to do when...

You're overwhelmed in a large lecture

*Exchange phone numbers with several students who sit by you—from now on referred to as "friends."

*Sit in the front/middle—known as "smart area" (fewer distractions, you and your "friends" will be seen as motivated students).

*Pay close attention to syllabus—once it is discussed at the beginning of the term it is your responsibility to know when things are happening.

*Visit your instructor during office hours or by appointment - share your concerns about the class and ask for study tips. (You have just become a face/person instead of a number.)

You've studied but aren't doing well

*Know when you are most alert, and then plan for classes and studying. (If you study at night don't plan early morning classes. If you get up at 4:30 a.m. don't expect to be awake and productive at midnight.)

*Utilize time between classes—look over notes from last class and next class. Mark anything you don't understand or have questions about, then ask instructors for clarification and/or additional information.

*Designate a "study place"—get

yourself accustomed to always studying in one place. (bed = sleep; table = eat; desk = studying)

*Stock your study area with everything you need so study is not interrupted to get things.

*Get all your senses involved—talk out loud, copy your notes/rewrite them, highlight, tape and play back when you read, ask questions and find answers in the text, use flashcards, study with your "friends."

You've missed many classes

*Don't do this!

*Make sure you know the attendance policies for all your classes.

*Find out what you missed—if it was just notes, get them from "friends." If it was more, visit the instructor during office hours or by appointment. (Be ready to explain your absence.)

*Speak with the instructor prior to absences if possible. (Be ready to explain.)

*Do not skip classes!

You've failed the first exam

*Don't panic!

*Did you go over the test in class? If not, visit your instructor during office hours or by appointment. Ask him/her to go over the exam with you.

Ask questions.

*Analyze what happened—did you not study enough, study wrong material (details vs. general concepts, terms, text vs. notes).

*Ask the instructor for tips on the next exam—what type of exam, how long, over what information.

*How well did your "friends" do? Organize a study group. (Instructors are often willing to help organize and/or get these started.)

*Don't dwell on it. Concentrate on the next exam.

Your days do not contain 38 hours

*Use a calendar—month-at-a-glance for assignments, day-at-a-glance or week-at-a-glance for scheduling. Color coordinate it (i.e.: yellow = homework; orange = exams; green = papers).

*Get organized—it saves time because you know what to expect and are better prepared. Look at your schedule now—what is good/bad, what can you change to be more efficient. (Look for wasted time.)

*Break large assignments into smaller tasks, work on things ahead of time, set early deadlines for yourself.

*Study along the way so you don't have to "cram."

*Set goals, set priorities, be willing to make sacrifices, be flexible, be realistic.

SGA welcomes students, new and old

For all new students joining us this fall, welcome! Whether you know it or not, you as an individual and your class as a whole will have a significant effect on our student body. The wealth of fresh ideas, creative concepts and strong leadership that exudes from a new group of incoming students is unmistakable. This past school year some of the most active and influential people in the student body have been freshmen and first year transfer students.

For those of you returning to the University for another semester, welcome back! As most of you know this University is one that is standing at a crossroads in many ways. Our ever-growing student population is slowly changing its demographic into a more and more traditional population. As you approach the Millennium Student Center from Interstate I-70, you will

notice the final stages of a construction project geared to ease campus access for our students. Right next to our brand new Millennium Student Center, we are eagerly awaiting the completion of a state of the art Performing Arts Center. These and the many other improvements being implemented throughout the campus continue to thrust this University into the front line as a top-notch public institution, not just in Missouri, but across the country as well.

I should not have to tell you, academically UM-St. Louis is an excellent choice. Our abundant resources, exceptional staff and outstanding faculty make our school comparable to some of the best institutions throughout the country. What makes UM-St. Louis an exceptional school is the experience and opportunities you will get outside of the class-

room. This campus offers a wide variety of athletic, academic and social organizations all geared to enrich your college experience. The Student Government Association alone has countless ways in which students can participate in meaningful and reciprocal ways. I can tell you from personal experience, getting involved gives each and everyone of us an even greater opportunity to realize our full potential.

You have made a great choice in coming to UM-St. Louis. As the old adage goes, school is what you make of it, so welcome one, welcome all, and come join us in achieving.

Samuel Andemariam
President, SGA
379 Millennium Center
Office: 314-516-5105
umslsga2002@yahoo.com

Research Subjects Needed

The University of Missouri-St. Louis School of Optometry is seeking subjects to participate in a research study about

Nicotine's Effects on Reading

Eligible subjects will be

- Current smokers, aged 18-35
- In good health
- Willing to attend three testing sessions over a two-week period (lasting 60 minutes for the first visit and 20 minutes for each of the last two visits)

Subjects will be paid for their time and will also receive a comprehensive eye examination at no cost.



Please call (314) 516-6534 or email LauraBarnesOD@hotmail.com for information and other eligibility requirements.



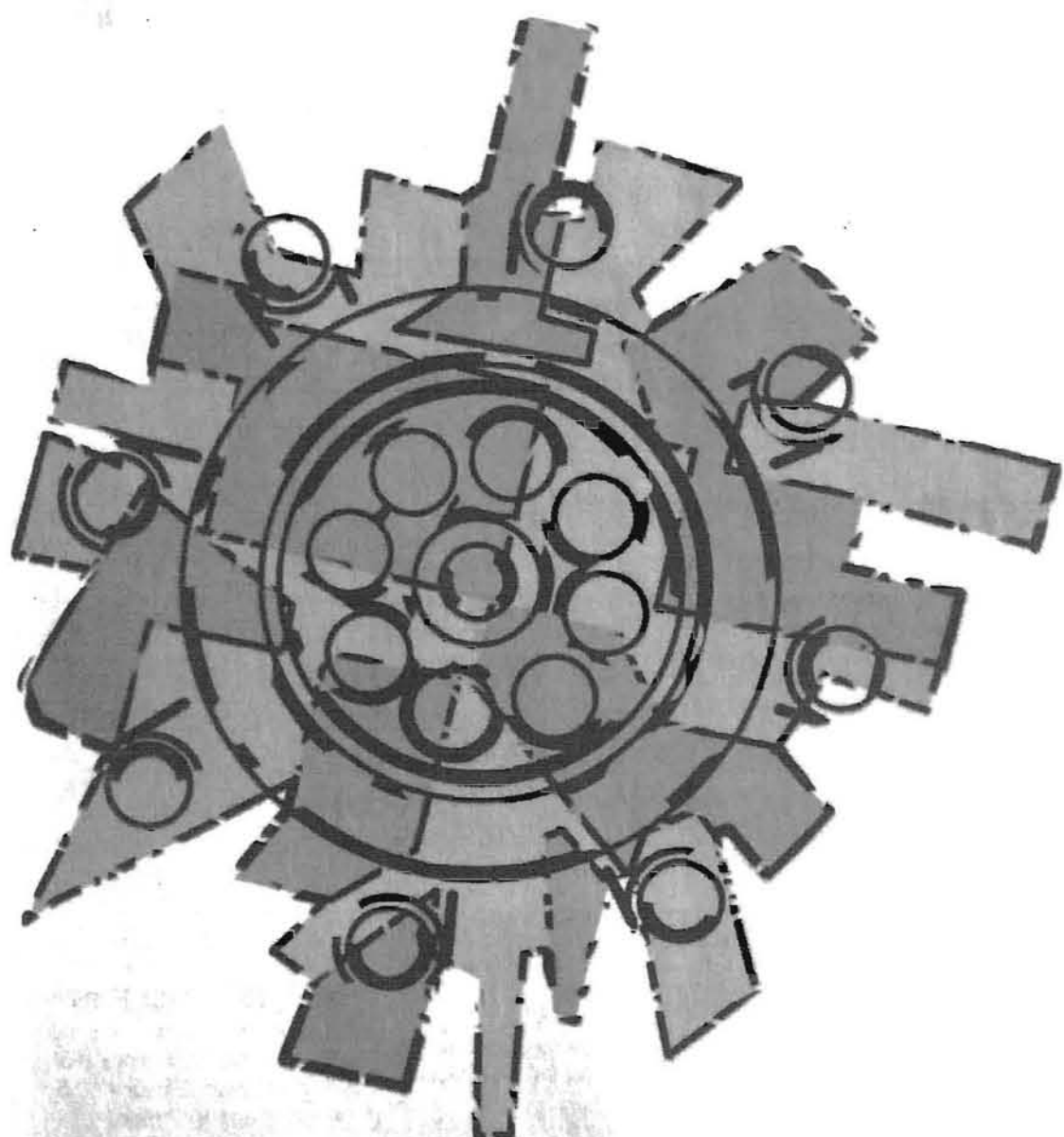
5031 NORTHRUP
ST. LOUIS, MO 63110
PHONE: (314) 664-5051
FAX: (314) 664-5364

"Helping Families Invest In Their Tomorrow...Today"

Do you think you'll ever want to buy a home or car? Worried about what kind of rates you'll receive, if you can afford it, or if you'll get approved at all? If your credit is not the best, let the staff of JPHRC show you how your dreams can become a reality.

JPHRC is St. Louis' leading non-profit credit and homeownership assistance agency.

Call today and mention you saw this add and receive a FREE credit report complete with your credit counseling. What do you have to loose, your future is waiting to be defined!



We are the Student Government Association.

We believe leadership should be diversified and dynamic.

We are you.

Stop following the crowd and start governing yourself.

379 MSC
314-516-5105

Summer 2002 new student orientation

Choice of Dates:

July 23rd, 24th, or 25th (for new freshmen)
8:00 am - 2:00 pm

July 19th (for new transfer students)
August 12th (open to all new students)
8:00 am - 12:00 noon

**Millennium Student Center
University of Missouri-St. Louis**

Contact Us to R.S.V.P.-

- Register for Orientation online at:
<http://www.umsl.edu/services/orientation> OR
- Call (314) 516-5211 and register by phone OR
- E-mail us at orientation@umsl.edu

For disability accommodations, please contact: (314) 516-5228
TDD (hearing impaired only): (314) 516-5212

All new students are expected to attend Orientation.

*We Look Forward
To Seeing You There!*



Curious students invest time in activities on campus

SARA PORTER
Senior Writer

In order for new students to get the most out of their UM-St. Louis experience, they must be made aware of some of the special events that take place on the campus. Curious students willing to invest a little time and money will not be disappointed!

Two of the most notable events are the Chancellor's Expo and Picnic and Mirthday. Chancellor's Expo is a weeklong series of events in September that includes games, psychic readings, live music, informational booths representing each of the student organizations and a picnic with food provided by Chancellor Touhill.

Mirthday is a May event that focuses more on celebration than information.

The parking lot of the Millennium Center becomes a carnival complete with rides, organization sponsored games and giveaways and plenty of food. Unlike the Expo, however, the food at Mirthday is not free.

Holidayfest is another big event for UMStL students. This celebration takes place in December, as students from every organization participate in caroling and decorating The Giving Tree, a large tree in the Millennium Center, along with other holiday-themed activities. Every person and organization is invited to contribute food or toys for charity during this time.

Live entertainment is another popular feature on campus. The "Wednesday Noon Live" series features prominent local musicians performing free concerts at the Millennium Center; last year some of the acts included Fairchild and Silvercloud and Edwards.

The St. Louis Shakespeare Company previously performed "Hamlet" and "As You Like It" in the JC Penney Auditorium. This year, the St. Louis Opera Theatre will perform the opera, "La Boheme."

UM-St. Louis has also played host to film festivals, usually held in the Pilot House and the Century Rooms. Most of them are centered on a theme,

such as a series of both new and older horror films in October for Halloween and films featuring prominent African-American performers for Black History Month.

Student Activities and the UPB welcomes guest lecturers on a regular basis. Past guests have included Lani Guinier, the first African-American female president of Harvard; Dr. Ruth Westheimer, noted therapist; F.W. DeKlerk, former President of South Africa; and Anne Richards, former governor of Texas. Discussions on contemporary issues such as the legalization of drugs, driving while under the influence, sexual harassment and the date rape drug have also been presented, as have lectures focused on historical accounts of era-shaping events such as the Civil Rights Movement and the Holocaust.

The special events on campus offer a wide range of interesting opportunities for students and are accentuated by the fact that they are often well within a college student's budget, meaning cheap or free.

Using the computer labs

PAM KAISER-LEE
Student Affairs Division

There are eight open access computer labs available to students on the UM-St. Louis campus. All the labs are staffed by a team of staff and student consultants from Information Technology Services, who strive to provide a consistent, reliable and customer-friendly instructional computing lab environment. Consultants can orient you to the hardware and software that are available and assist with many software issues.

Three different operating systems are available in each of the labs: Sun Solaris, Macintosh and Windows 2000. Some of the labs have all three available, while others are platform specific. Several of the labs also offer black & white printing, color printing and color scanning.

Trained student consultants staff each Computer Lab during its hours of operation. Their primary mission

is to provide friendly customer service within the limits of their training and abilities. Lab consultants will be able to answer most questions concerning the commonly used campus applications. If they don't know the answer to your question, they will try to get it for you. However, consultants will not do student homework or assist with programming problems!

UM-St. Louis instructional computing labs are open long hours each week during the academic year. Refer to the Labs web site (<http://www.umsl.edu/technology/instructionalcomputing/Labs/labs.htm>) for current lab hours. Open hours are set each semester after a careful review of usage statistics, class schedules and other factors.

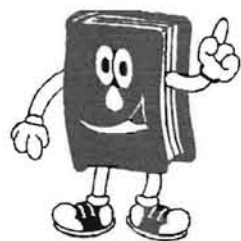
For more information on the Instructional Computing Labs, consult the Labs' web site at <http://www.umsl.edu/technology/instructionalcomputing/Labs/labs.htm> or call the Technology Support Center at (314) 516-6034.

Open Student Computing Labs:

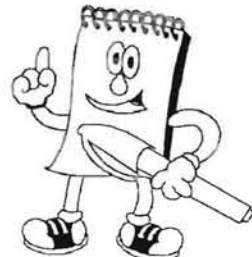
232 Benton Hall
Thomas Jefferson Library
Research Commons
103 Social Science & Business Building
200 South Campus Computer Building

Other Student Computing Labs:

134 Honors College
409 Social Science & Business Building
425 Social Science & Business Building
452 Social Science & Business Building
105 Music Building
The Chat Room in the Millennium Student Center



NEEDED



READERS / WRITERS / TEST ASSISTANTS
FOR
STUDENTS WITH DISABILITIES

These **paid positions** are available for Fall Semester 2002, on a limited basis, for qualified students to assist students with disabilities during scheduled exams.

DUTIES INCLUDE

- ❖ Research assistance
- ❖ Recording textbooks
- ❖ Classroom assistance
- ❖ Writing for exams
- ❖ Reading and writing for exams
- ❖ Reading for exams

INTERESTED? PLEASE CONTACT:
DISABILITY ACCESS SERVICES
MARILYN DITTO-PERNELL

516-5228
144 MILLENNIUM STUDENT CENTER

Know Your Stuff?



Want to get Paid?

If you have:

- ✓ at least 60 credits
- ✓ a cumulative GPA of 3.0+
- ✓ specific course grades of A/B

You might qualify to be a tutor this Fall!
Contact Student Support Services
at 516-6554.

- ◆ On campus work ◆ No weekend hours
- ◆ Set your own schedule ◆ \$10/hour

**UM-St. Louis students, faculty and staff:
Classifieds are FREE!**

**CLASSIFIED
RATES**



**(314)
516-5316**

Otherwise, classified advertising is \$10 for 40 words or less in straight text format. Bold and CAPS letters are free. All classifieds must be prepaid by check, money order or credit card. Deadline is Thursday at 3 p.m. prior to publication.

<http://thecurrentonline.com> ads@thecurrentonline.com

Help Wanted

Intelligent Professional People

To train as consultants for a \$2 Billion International Public Utilities Co. **Tremendous Income!** Call 1-888-414-8256 (Code: STL) or www.excelir.com/justgotpaid. (Deposit required for Natioanl Accreditation in most states.)

Tutors Needed

Qualifications: A/B average in the class, cumulative GPA of 3.0, completion of 60 credit hours. Benefits: \$10 per hour, set your own schedule, campus position. Please contact Allison via phone at 516-6554, email todd@umsl.edu, or in person at 144 MSC.

Mass Media Study

UMSL researchers seeking volunteers for study about the mass media. Participation takes 45 minutes and volunteers will be paid. For further information, call 314-516-6662, e-mail halla@msx.umsl.edu, or check web-page at <http://www.umsl.edu/~halla/mstudy.html>.

Research Assistants needed in the Fine Arts Bldg for Fall/Winter

Darkroom, Printmaking and Painting Studios. Art major with computer experience and all aspects of photograhya plus. Hours to be arranged, send resume to April in Fine Arts Bldg.

Help wanted

Computer Lab Manager

(Maximum 30 hours per week.) supervise and maintain 4 Macintosh (student) computer labs on campus. Art major preferred, BFA ideal. Responsibilities: supervision/training of lab assistants, supervise ordering of supplies, coordinate repair from outside venders, respond quickly to student and faculty repair issues. Previous experience required. Call April in FAB at 516-6404.

Fun Job on Campus

We are looking for dedicated and enthusiastic UMSL students who would like to work as a Peer Educator during the Fall 2002 semester. You will: gain leadership skills * plan, publicize, and present campus events * assist students in the Career Resources Center * work 10-20 hours a week. Horizons Peer Educators 516-5730, 427 SSB, horizons@umsl.edu.

For Sale

2000 Yamaha YZF-R1 Sport Bike

IMMACULATE condition, blue/white, 53xx miles, garaged and covered, MANY extras including Stage 2 Jet Kit and Yoshimura Exhaust, etc. Asking \$7995/Call Chris or Nicole at 636-461-1106 or 636-346-6127.

For Sale

MUST SELL!

Honda Civic Dx 93
87,000 miles, 5-speed manual, new timing belt. Runs great. Asking for \$4,000 (negotiable). 314-516-7318.

Misc.

UMSL Life Group

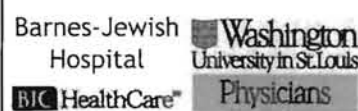
Enjoying God; enjoying each other. Dedicated to seeing God through relationships and faith. Please contact Alex via e-mail: amkd4f@studentmail.umsl.edu.

EGG DONORS NEEDED

Healthy Women
Ages 18-32
Willing to Help
Infertile Couples

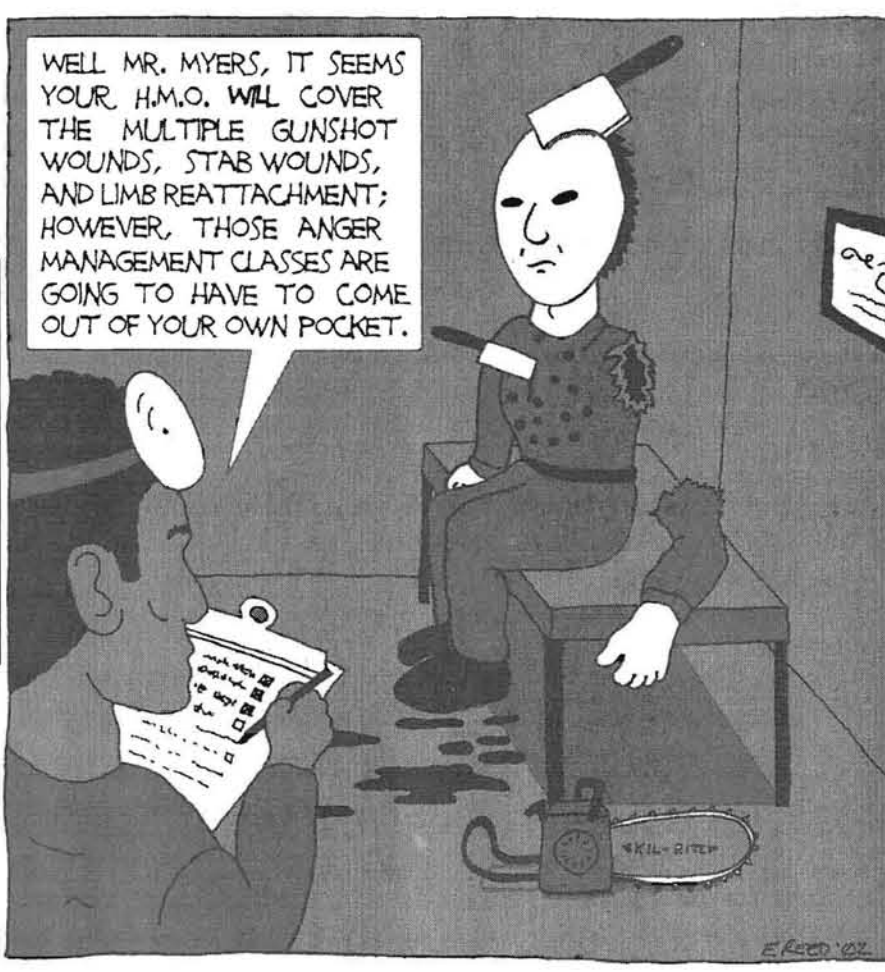
Call Sue Bettale, RN, BSN
314-286-2419

The Infertility and Reproductive Medicine Center



A Patriot Says...

ONE OF THE PERKS OF WORKING FOR THE TOP-RATED STUDENT PAPER IN THE STATE IS THAT YOU GET THE INSIDE SCOOP ON A NUMBER OF IMPORTANT ISSUES, SUCH AS WHY PSYCHOPATHS KEEP COMING BACK: AGAIN & AGAIN & AGAIN!



PROFESSIONALS WANTED!!!!



TREMENDOUS INCOME POTENTIAL

1-888-414-8256 Code: STL

or
1-888-377-0312 for Appt.

www.excelir.com/justgotpaid

Place a classified. They are free for students and staff.
516-5316



**IS HIRING
PACKAGE HANDLERS
\$9.00 PER HOUR**

BENEFITS

- MORNING SHIFT 6:00 a.m. – 10:00 a.m. or 1:00 p.m. – 6:00 p.m.
- TUES – SAT WORK WEEK
- TUITION ASSISTANCE AFTER 30 WORKING DAYS
- 50 CENTS INCREASE AFTER 30 DAYS
- FUTURE CAREER OPPORTUNITIES

REQUIREMENTS

- 18 YEARS OR OLDER WITH A H.S. DIPLOMA/GED
- RELIABLE TRANSPORTATION
- ABILITY TO LIFT 30 – 50 POUNDS

APPLY IN PERSON BETWEEN THE HOURS
OF 10 a.m. – 4 p.m. TUES – SAT

FEDEX HOME DELIVERY

13225 Lakefront Dr.
Earth City, MO 63045
PH: 314-298-3829
Fax: 314-298-3868
E-mail: Stephen.marteen@fedex.com

**WOMEN AND MINORITIES ARE ENCOURAGED TO APPLY
EEO/AA**



Are you an *energetic* hard working person?
How would you like to work for the **busiest restaurant in town?**

If you answered yes, then come to: **The Old Spaghetti Factory**
727 N. First Street (On Laclede's Landing)
and fill out an application

We are currently hiring for all positions: **Some of the great employee benefits include:**

- *Server
- *Busser
- *Greeter
- *Kitchen
- *Employee Discounts
- *Flexible scheduling
- *Metro Link Access (1-1/2 blocks away)
- *Set your own schedule

No experience is necessary!
You must be 16 to work here, 20 to wait tables

CHARTWELLS
• CATERING DEPARTMENT •

Earn up to \$10 per hour

Hiring on-call banquet servers for evenings and weekends.

Applications are being accepted at the NOSH.

ON THE MOVE

Student Savings at Lucas Hunt Village

Call Today
381-0550



- Minutes from UMSL
- Park-Like Setting
- Choose Hardwood Floors or Carpet
- Free Concierge Service
- Privacy Entry Gate
- Tennis Courts
- Ceiling Fans
- Bi-State Bus Stop
- Garages and Carports
- 24-hr. Emergency Service
- Multiple Laundry Facilities
- Free Heat and Water
- Pool



Photos by Hank Burns/ The Current

Local garden mixes education with fun

BY MICAH ISSITT
Staff Writer

The Missouri Botanical Garden is widely considered one of the top three botanical gardens in the world. Without a doubt, it is a beautiful place to visit.

Opened to the public in 1859, the Missouri Botanical Garden now boasts 79 acres of horticultural displays and an annual attendance of over 750,000. In the spirit of its founder, Henry Shaw, the garden continues with the same mission: to discover and to share knowledge about plants and their environments. In keeping with this tradition of accessibility, the Garden caretakers have created special features for every different group to enjoy. The garden is located on the grounds of Shaw's country home and includes his lovely Victorian house. The site also includes the Climatron, an early geodesic dome that is a landmark loved by generations of St. Louisans.

Today the Garden serves as an

international hub of both tourism and scientific research. The Garden has initiated the world's most active tropical botany research program, operating 25 major flora projects and active in over 30 countries. Garden research is offered to students from around the world and to the public via the Internet.

Strolling through the Garden is a treat for the senses. The Garden provides a wide variety of miniature gardens for the family to visit. They have a 14-acre Japanese Garden, as well as smaller Chinese, English, German and Victorian gardens. Regardless of the theme, the graceful design of the Garden creates a pleasing flow from one area to the next. In warmer months, gorgeous flowers everywhere surround visitors.

Toward the western side of the northern edge of the garden is the Scented Garden, containing roses and other fragrant flowers and plants and is intended partially as a way to allow vision-impaired people to enjoy the

botanical world.

The Garden's educational program offers classes for adults and children, covering everything from gardening to tropical ecology. On the Garden grounds, visitors can tour the Kemper Center for Home Gardening, the most comprehensive resource for gardening information in the world.

For some, the Garden's 79 acres might seem quite an imposing trek, and so the Garden provides planned tours catering to special groups of visitors including wheelchair-accessible and stroller-friendly tours and several activity-related tours geared towards families with children.

One of the best things about living in St. Louis is having access to so many inexpensive museums and special interest areas. The Missouri Botanical Garden stands out as one of the most important and impressive national and local landmarks.

For more information on the Missouri Botanical Gardens, see <http://www.mobot.org>.

Studying tropical ecology links UMSL to global community

CATHERINE MARQUIS-
HOMEYER
A&E Editor

UM-St. Louis' International Center for Tropical Ecology is not a place.

The International Center for Tropical Ecology is a collaboration between the Missouri Botanical Garden and UM-St. Louis, aimed at promoting "education and research in tropical biology, conservation and the sustainable use of tropical ecosystems." The ICTE also strives to educate the community about the vital role that tropical areas play in world ecology. It is a world-class program with international recognition that draws students from around the world to UM-St. Louis. It is the premier tropical research program in the world, right here in the American Midwest.

UM-St. Louis's tropical ecology and conservation research division, the International Center for Tropical Ecology, serves as the research partner of the Botanical Garden in tropical ecology. In addition to providing our area with beauty, the Missouri Botanical Garden is a world-class facility that takes part in a significant amount of research in tropical biology, in conjunction with this University.

The International Center for Tropical Ecology is the greatest concentration of tropical ecologists in the world. Founded in 1990 as a cooperative effort between UM-St. Louis and the Missouri Botanical Garden to promote research and community awareness in tropical ecology, the ICTE supports graduate research at the University in tropical ecology and conservation. The ICTE also works with a number of other research facilities and universities in conservation, including the St. Louis Zoo, in both research and in encouraging public awareness of tropical ecology and conservation. Scientists associated with the ICTE are some of the leading world authorities in tropical ecology and conservation.

In addition to supporting research, the ICTE sponsors a number of events throughout the year. One of these is a Fall symposium, the Conservation Forum, which brings together various groups working to conserve the environment, along with scientists, to discuss topics that affect tropical ecology, over a several-day event. In the spring, the ICTE participates in Earth Day events. Also in spring, the ICTE

presents the annual Jane and Whitney Harris Lecture, a lecture by a noted tropical scientist, which takes place at the Botanical Garden's Ridgeway Center. This accessible presentation is aimed at both the general public and scientists and often is as enjoyable as it is informative. This past year, Dr. Martha Crump gave an engrossing talk and slide presentation called "In Search of the Golden Frog," in which she compared her research to the Central American myth about a search for a frog that is supposed to bestow happiness. Part memoir, part travelogue, part informative talk, it was colorful and highly entertaining besides being educational.

In May, the ICTE presents its annual World Ecology Award, in a gala dinner presentation. The World Ecology Award was created by the International Center for Tropical Biology to recognize prominent individuals who have drawn the public's attention to the issues of global ecology and conservation. Past recipients of the World Ecology Award include Jacques Cousteau, Richard Leakey, Jane Goodall, and John Denver. This year's recipient was Harrison Ford, along with his organization Conservation International, a group that helps identify ecological sites in need of conservationists' efforts, for their efforts for world conservation.

In recent years, the ICTE has also sponsored World Ecology Day, where ecological and conservation scientists present lectures on a topic that affects world ecology. The topic in 2000 was "Meateaters: Predators and their Prey," and included talks on Ozark black bears, spotted hyenas and jaguars.

Summer is devoted to research, with the professors and students working out of the several multi-university field research centers the ICTE helps support. Because all ecosystems are interconnected, studies may include migrating species, such as birds that summer in temperate zones like Missouri and winter in the tropics, so research takes place in field centers around the globe as well as in Missouri.

This may be the best-kept secret on campus, but now you have a chance to glimpse their work and find out why this is important for all of us. Tropical forests have been called "the lungs of the world" for their important role in replenishing the oxygen in our atmosphere. Check out the many educational, and enjoyable, programs offered to the St. Louis community throughout the year by the ICTE.

Forest Park glimmers with a ray of beauty, history and knowledge

CATHERINE MARQUIS-
HOMEYER
A&E Editor

Forest Park is one of the jewels of the St. Louis area. This large, beautifully designed park sits at the western edge of the St. Louis city limits, making it a drawing card for the city and county alike. To the east, you find the Central West End, home to the Chase theater, elegant shops and restaurants, and equally elegant homes. To the west is Washington University, and the lovely homes and busy city of Clayton. To the south, you see the quirky, Irish-flavored area known as Dogtown, with the St. Louis Science Center and the Hi Pointe theater anchoring the east and west corners. To the north, there are the mansions lining Lindell Boulevard, the DeBaliviere area, and a bit west, the Delmar Loop. It's hard to imagine a spot more in the center of everything interesting and vibrant in the St. Louis area.

Despite its name, there isn't a lot of forest left in Forest Park. There is plenty of green and plenty of attractions, many of which date back to the St. Louis 1904 World's Fair. The Fair led to the creation of Forest Park, as well as several of the museums. These attractions include the Zoo, the Science Center (which straddles Highway 40/64), the Art Museum, the History Museum, the Muny Opera and others. Surrounding these sights are rolling hills of green, winding roads, trees, ponds and lakes, jogging paths and walkways, picnic grounds and a golf course. It's a good thing it's such a large park.

Let's look at some of the major institutions found in the Park. The St. Louis Zoo is considered to be the best free zoo in the country and one of the best zoos anywhere. The graceful

park-like design of the Zoo dates to the World's Fair, but it has been lovingly maintained and sensitively and intelligently updated over the years. Every kid who grew up in St. Louis has fond memories of the Zoo, but its fun and educational for any age.

The latest addition to the Zoo, the River's Edge, continues its trend of recreating ecosystems by presenting a riverbank and savannah setting in which you can see African elephants, hippos and other creatures you might find in or near an African stream. Other exhibits may be grouped by type, like the modern outdoor Big Cat Country or the indoor displays of the Reptile house. The Reptile House, and several of the other centrally located displays, retains the Victorian charm of the original buildings while creating a modern comfortable and naturalistic display of the animals. They are often as interesting and appealing as the animals they contain. If you get tired on your stroll around the spacious Zoo, you can always take a ride on the Zoo's miniature train if you visit in the warmer months. However, the Zoo is open year-round, so you can see the Polar Bears playing in the snow if you need something to pick you up in the winter months.

One of the most beautiful places, inside and out, in Forest Park is the Art Museum. The Art Museum is housed in the most elegant, graceful building from the 1904 World's Fair. This classic beauty sits at the crest of Art Hill, just uphill from the Zoo. It overlooks the spectacular Grand Basin, the formal stone-encircled lake that, together with the steps leading up to the museum and the statue of St. Louis in front of the museum, makes one of the best known postcard views of St. Louis, second only to the Arch. This imposing Neo Classical building resembles the Museum of Natural History and the Shedd Aquarium in

Chicago, sharing the same era and architect.

Inside, the Art Museum building has been restored to let in natural light, so you can appreciate the Italian fountain and courtyard recreated in the center hall and the art throughout. The Art Museum has a wonderful collection of great art, including paintings by Monet, Renoir, Van Gogh, Rembrandt and Degas. Art from the Middle Ages and the Renaissance, along with Impressionist paintings and Degas and Rodin sculptures and other classic works of art fill the first floor. The first floor also hosts traveling art exhibits, like last Spring's John Singer Sargent exhibit. There is a fee for these special exhibits, but the rest of the museum is free. Even the special exhibits are free on Tuesdays.

The lower level of the museum has what may be the finest collection of Mayan art in the world, along with Egyptian and African artifacts and exhibits of decorative arts. Upper levels house a breath-taking array of modern art not to be missed, along with photographic and print exhibits. The museum also has a large auditorium for special lectures and a wonderful little restaurant and gift shop.

If you travel further north and east, you will find the History Museum near the Lindell Boulevard edge of Forest Park. Originally housed in the Jefferson Memorial, the museum has recently been expanded into a larger but still graceful structure that incorporates that building. Inside, there are wonderful exhibits and artifacts of St. Louis and Missouri history. Strolling around the museum is free but special exhibits have a fee. Merriweather's Café is a lovely spot to have a gourmet lunch. There is something for every kind of history fan, from mementos of Lindbergh's flight to the pilothouse from an old paddle wheeler. Everything from Native American

artifacts to Victorian toys can be found in the History Museum.

The other big museum found in Forest Park actually straddles the south edge along Highway 40/64. That, of course, is the Science Museum. The main entrance to this sprawling attraction is on Oakland Avenue parallel to the highway, but the exhibits on the bridge spanning the highway leads you right into its extension in Forest Park. The Science Museum, like the other attractions, is free, except for special exhibits. The museum presents a playground of science related exhibits designed to educate and entertain, with a high degree of "hands-on" in the presentation. Everything from dinosaurs and paleontology to physics, chemistry and biology are presented here, in exhibits geared to kids young and old, and adults too. In the center of the main building is the Omnimax Theater.

One of the St. Louis' most popular traditions is found in Forest Park. For generations, summer has brought people in the St. Louis area to the Muny Opera, the open-air amphitheater in the park. The Muny doesn't offer opera, but instead a series of light, familiar, local productions. The Muny usually presents older musicals and other family musical offerings, and often hosts favorites repeated year after year. For many St. Louis kids, this was their first taste of live theater. The outdoor setting has a unique appeal in pleasant weather, with productions getting underway as the sun is setting.

There are even more attractions to explore in Forest Park, and it may sound to you like this would be a crowded site. It isn't. There is plenty of green space in the park and lovely vistas and room to stroll, roller-blade, run or relax on the grass under a tree. It is an emerald in the middle of the city.



The Missouri Botanical Garden is filled with beautiful vistas, colorful fish, lush foliage, inspiring sculptures and Victorian architecture. Take a book and enjoy a relaxing afternoon taking in one of the world's best.

Theaters with reel appeal

Tivoli, Hi Point, Frontenac offer alternative films

CATHERINE MARQUIS-HOMEYER
A&E Editor

If you just want to go to a movie, there are plenty at the multiplex theaters to choose from. But if your tastes run to the higher end of cinematic art, there are you heed to look a little further. Fortunately, there are some great venues for alternative films-art house and foreign films, indie films and even documentaries.

'One of the premier spots for cinema in St. Louis is the Tivoli Theater.'

One of the premier spots for cinema in St. Louis is the Tivoli Theater. This one is hard to beat for total movie-going experience. The Tivoli is a restored 1920s movie house in the heart of the Delmar Loop area, near restaurants, clubs, shops and Washington University. The Landmark theater chain, the major foreign and independent film chain in the country, runs this beautiful theater although the building is still owned by Joe Edwards, who did the wonderful restoration, and who also owns the Pageant and Blueberry Hill.

The Tivoli shows independent films, foreign films and some higher end, more artistic, mainstream films. It is also the main place to see edgier, gritty, independent films or really challenging art films. Generally, they don't book family films or teen films, so there usually are few, if anyone, under college-age in the audience. Being part of the Landmark chain, this theater and its sister theater at Plaza Frontenac get the greatest variety of first-run alternative and foreign films in town. The Tivoli is also one of the venues for the St. Louis International Film Festival, the big yearly film festival.

Besides offering some of the best indie and foreign films in town, this splendidly renovated 1925 movie palace is a visual treat for both fans of

architecture and movie buffs. The Tivoli is less ornate and fanciful than the Fox, a renovated 1920s movie theater that is now host to live performances, but the Tivoli is a perfect movie venue. The entrance and box office are beautiful, as well as historic. The lobby is full of gorgeous architectural details and the most fascinating collections of old movie posters and memorabilia. There are three "houses" (as the auditoriums are called in the movie business) in the theatre-two small ones and a large grand "house" in the front half of the original theater. The Tivoli was built for live vaudeville shows as well as movies, and has a stage and functioning curtain. If at all

possible, you want to see something in the main theater, to get the fullest experience, but the smaller houses are just fine too, if less ornate.

The concessions are gourmet, offering fancy coffees, tea, and juices, Toblerone candy bars, and gourmet popcorn with real butter. To enhance your visits to the Tivoli, the staff members are friendly and responsive, and these people really love films. Some of them are remarkably knowledgeable about films. Just go in and ask John, who takes the tickets, to recommend a film, for he has great taste.

The other two Landmark chain theaters in town are the Hi Point and Plaza Frontenac.

'Plaza Frontenac often has the best picks of lush beautifully photographed foreign films.'

Plaza Frontenac often has the best picks of lush beautifully photographed foreign films, especially the epic or historic ones. But while it has the same good concessions as the Tivoli, it is a modern multiscreen theater in a mall, and lacks the charm and even some of the comfort of the historic Tivoli.

Landmark recently acquired its

Theater Listings

Tivoli
6350 Delmar
862-1100

Hi Point
1001 McCausland
781-0800

Plaza Frontenac
Clayton & Lindbergh
994-FILM

'The Hi Point is a sentimental favorite for many St. Louis filmgoers.'

third theater, the previously independent, Hi Point. The Hi Point is a sentimental favorite for many St. Louis filmgoers, including myself. This is a much quirkier venue than the restored Tivoli Theater, but it has acres of charm. The Hi-Pointe is located at a kind of crossroads, at the intersection of the Clayton and Skinker/McCausland roads, which is also at the intersection of the city of Clayton, Forest Park and the Dogtown area of St. Louis. It has the longest history, was run by a movie theater family and was long the only place to see foreign films. Built in 1922, the Hi-Pointe is actually the oldest remain-

ing movie theater in town; but because it was remodeled in the early 1960s, it has a late fifties-early sixties retro look that will appeal to fans of that now-hot style. Walking up to the theater presents a very appealing traditional movie house look, with a wonderful marquee and box office. The style changes as you enter the cozy and

comfortable lobby, which shows the greatest effect of the makeover, with typically early 1960s décor in green tones, paneling and retro light fixtures. Autographed pictures of movie stars, old movie posters and mementos from the Hi-Pointe's long history line the walls and are part of the lobby's appeal. The Hi-Pointe is also the last remaining single screen theater. The large auditorium retains some of the original Art Deco elements, like the light fixtures and wall molding, and a really big screen but it also has the most comfortable seats in town and the best state-of-the-art sound system. The state-of-the-art equipment of the theater is what allowed it to get the exclusive run for the director's cut "Apocalypse Now Redux" last summer, as the distributors were very exacting about having the highest technical quality in the theatre.

With just one screen, the Hi Pointe tends to show foreign films with lush visuals that look best on its big screen.

Another great spot to see a wider range of films than the typical multiplex is the Chase. The Chase and its sister theater, the Galleria, are new theaters with multiple screens but present an artistic look. These theaters offer mainstream films along with art and indie films, and show foreign films less frequently. One big difference with these theaters is they also sell beer and wine, along with gourmet concessions. Both theater complexes are decorated with murals, have a plush opulent look and invite moviegoers to linger in the comfortable surroundings.

Both are nice theaters but the Chase is more likely to offer the kind of films cinemaphiles crave. Located in the renovated historic Chase Park Plaza hotel, the Chase is a new theater but built to the art-house model. It has four screens, including a larger house with stadium seating, although none of the

see THEATER, page 3B



Photos by Mike Sherwin/The Current

Above: The Tivoli Theater is a restored 1920s movie house in the heart of the Delmar Loop area. Opposite Page: Built in 1922, the Hi-Pointe is located the intersection of the Clayton, Skinker and McCausland roads.

The Tivoli Theatre presents

REEL LATE

MIDNIGHT MOVIES

Friday and Saturday nights • Landmark's historic Tivoli Theatre is located at 6350 Delmar Blvd. in the heart of the University City Loop. Call 314-862-1100.

THE PRINCESS BRIDE
July 19 & 20

AUDITION (ODISHON)
July 12 & 13,
July 19 & 20

Dr. Strangelove
August 9 & 10
August 16 & 17
Also Matinee Screenings
Sat. and Sun.
August 10 & 11 @ noon

Metropolis
August 16 & 17
August 23 & 24
Also Matinee Screenings
Sat. and Sun.
August 17 & 18 @ noon
August 24 & 25 @ noon

Trainspotting
August 23 & 24
August 30 & Sept. 1

The Goonies
August 30 & Sept. 1
Sept. 6 & 7
You Asked For It!
New 35mm Print!
Never-Before-Seen
Director's Cut!

Flesh Gordon
Sept. 6 & 7
Sept. 13&14
New 35mm Print!

Donnie Darko
Sept. 13 & 14
Sept. 20 & 21
Staff Choice!

Blue Velvet
Sept. 20 & 21
Sept. 27 & 28
Oct. 4 & 5
Director David Lynch's
cult hit

**Vampire Hunter D:
Bloodlust**
Sept. 27 & 28
Oct. 4 & 5
St. Louis Premier!
New Japanese Animation



STEPHEN HOLDEN OF THE NEW YORK TIMES RAVES ABOUT 'THE NEW VERSION':
"MORE ROMANTIC, MORE EMOTIONAL AND ULTIMATELY MORE SATISFYING THAN THE ORIGINAL!"

"★★★★!
IRRESISTIBLE!
A love letter to the
fantasy of movies!"
-Rebecca Wallace, NEW YORK DAILY NEWS

For those who've never seen it...
for those who've never forgotten it.

CINEMA PARADISO
THE NEW VERSION

Digitally remastered, fully restored, with all new never-before-seen footage.

MIRAMAX FILMS &

7:00 p.m. Thursday, July 18
Tivoli Theatre

No purchase necessary while supplies last. Passes available on a first-come, first-served basis. Participating sponsors are ineligible. This film is rated R for some sexuality.

OPENS IN THEATERS ON FRIDAY, JULY 19

MIRAMAX FILMS &

The Current
Your source for campus news and information

invite you and a guest to a special screening.
Stop by The Current offices at 388 Millennium Student Center to pick up a complimentary screening pass for two to see

CINEMA PARADISO

Everyone says he should date girls his own age.
Oscar respectfully disagrees.

Stacy FOSTER
John RITTER
Peter NEUWIRTH
Aron STANFORD

Tadpole

This summer, innocence is taking a vacation.

MIRAMAX FILMS &

The Current
Your source for campus news and information

invite you and a guest to a special screening.
Stop by The Current offices at 388 Millennium Student Center to pick up a complimentary screening pass for two to see

Tadpole

7:30 p.m.
Thursday, July 25
Plaza Frontenac Cinema

No purchase necessary while supplies last. Passes available on a first-come, first-served basis. Participating sponsors are ineligible. This film is rated PG-13 for sexual content, mature thematic elements and language.

OPENS IN THEATERS ON FRIDAY, JULY 26

THEATER, from page 2B

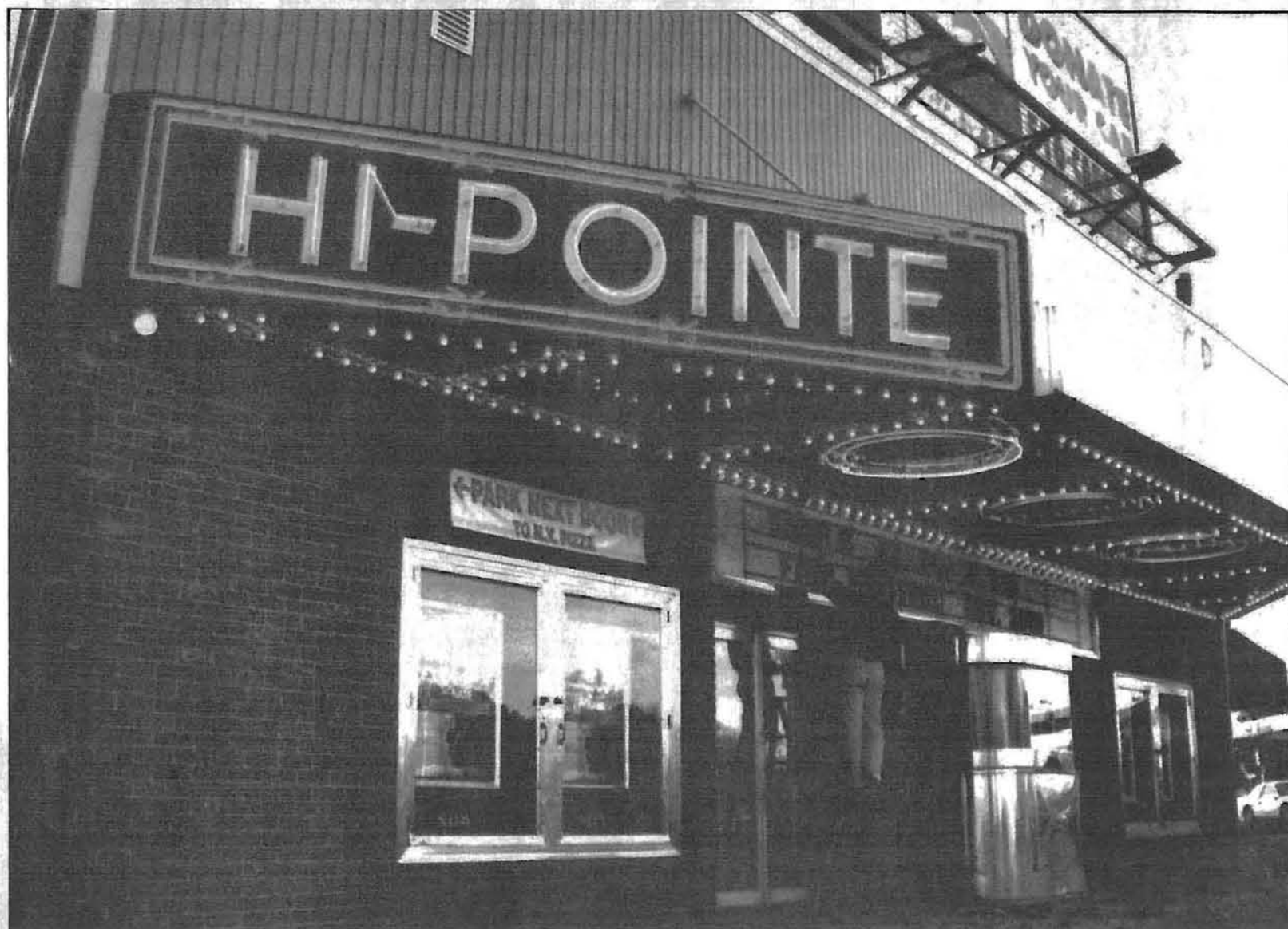


Photo by Mike Sherwin / The Current

The Fox proves to be fabulous

BY MICHELLE ELKINS
Staff Writer

Rich in diversity, St. Louis is a city well-rounded in artistic expression. The Fox Theater, a local jewel box, has been delivering the sights and sounds of entertainment since 1929.

The exotic temple built by William Fox was originally created as a movie house. The inside is breathtaking with its crowning feature of a 12-foot 2,000 pound chandelier. This monstrous globe is illuminated by 20,100 watts of power. The atmospheric cloud affects each performance with its ability to change colors with the mood of the music and program features.

Anchored in the entertainment district along North Grand Boulevard alongside Jazz at the Bistro, Powell Symphony Hall and the Black Repertory Theater, the Fabulous Fox reigns queen.

Bringing the finest from Broadway, dance productions, popular comedians, magic shows, contemporary concerts like R & B, country, rock, jazz, and pop, the Fabulous Fox is the premier palace for entertainment.

The upcoming season features Broadway's most popular shows.

Valerie Harper in "The Allergist's Wife" debuts September 17th, "West Side Story" hits the stage October 22nd; the infamous "The Producers" makes its way here on December 10th. Bringing in the New Year is "42nd Street" arriving March 4th followed by "The Full Monty" on April 15th. The highly anticipated "Lion King" makes its premiere in August of 2003 and runs through October. Get your tickets early; each performance is sure to sell out.

Visit the office of Student Activities located at 366 Millennium Student Center for your chance to purchase discounts tickets to select shows. Last year, students were able to enjoy "The Nutcracker," a yearly treat, and "The Phantom of the Opera." Tickets to performances in other venues, such as Powell Hall, the Black Rep and the Savvis Center are also available. Stop in monthly and pick up a calendar of events to check out what's going on and plan yourself a special evening on the town or a fun time out with friends.

For more information on the Fox Theater, visit <http://www.fabulous-fox.com>.

houses are as large as the main screen at the Tivoli or the Hi-Pointe. The Chase is an independent theater, run by an energetic and personable owner, Harman Moseley, who has also been in the theater business for many years. Moseley is now also running a new theater, the Screening Room, in the Ritz Carlton hotel in Clayton.

Besides the theaters for first-run art-house films, St. Louis offers some special film festivals and ongoing film programs.

The big film festival event is the annual St. Louis International Film Festival, which takes place over about 10 days in early November. This ever-growing program features better than 100 films, with a special focus on bring the best foreign-language films to our area. The films are mostly

recent; usually films released in the last two years, and also include documentaries and short films. It is usually the only place you have a chance to see Oscar nominated documentaries and shorts. The festival runs from afternoon to evening over its ten days and most films are shown twice to give festival-goers a better chance to see them all. In the past the Festival has taken place at the Tivoli Theater, the Hi-Pointe and Webster University. The festival office starts distributing programs for SLIFF in October, or you can check their website at www.sliff.org. The festival organization also sponsors a local filmmakers showcase is June and a Best of Fest return showing of some of the top film from the fall event, usually in February.

If you like older films, there is the Meramec Classic Films festival, which appears every other year at St. Louis Community College at Meramec. The primary emphasis of this free, two-day festival is silent films, and it is about the only place in town to see these great history films, which are given live accompaniment. In addition, the festival showcases student films in each program. This festival takes place in May 2003. It is open to the public, free, and you can find out more about it from the community college in April 2003.

For cult film fans, the Tivoli Theater offers a Midnight series every year, with two cult favorites or offbeat films running every weekend at midnight throughout the summer months. Contact the Tivoli Theater, and they

will be glad to give you a poster listing the films. Another place to see offbeat and cult films is the City Museum's Cinema in the City, and after-hours once-a-month screening in Beatnik Bob's Café in the Museum. The films are sponsored by the Webster Film Series, and you can get info on the films from them.

This brings us to the year round program offered by Webster University. The Webster Film Series is open to all and shows a great variety of film, from foreign to classic to cult to the off-beat indie films. Not all film are new and usually this is one of the best places to see great classic films and obscure or little shown films. The program runs year round, and you can find out more by contacting Webster University.

For up-to-date movie and music review check out our website at www.thecurrentonline.com

Community Psychological Service



- Professional, confidential, affordable services.
- Sliding scale fees.
- Counseling for children, adults, couples & families.
- LD and ADHD evaluations.
- Evening appointments available.

To Find Us
UM-St. Louis
232 Stadler Hall

To Contact Us
314-516-5824
www.umsl.edu/~cps

COUGAR'S CLUB

Located on 7312 Natural Bridge Road

Happy Hour is 7 Days a week from 5 p.m. to 8 p.m.

DANCE FLOOR, GREAT FOOD

OPEN FROM 4 P.M. TO
1:30 A.M. - MON. THRU SAT. AND
SUN. 4 P.M. TO MIDNIGHT



CAN ONE VOICE MAKE A DIFFERENCE?

YES.

Take action to protect your reproductive freedom.

The threat is real. For the first time since the right to abortion was affirmed by the Supreme Court, we have an anti-choice President, an anti-choice majority in Congress, and a fragile 5 to 4 majority in the Court. Get active. Start a pro-choice group on your campus. Volunteer or intern at PPSLR. Contact us at takeaction@ppslr.org. Don't let politicians take away your rights. Make your voice heard.

1-800-230-PLAN • www.ppslr.org  Planned Parenthood® of the St. Louis Region

Welcome Students!

University Bookstore & Computer Shop

Your campus headquarters for...Textbooks, General Books and Study Materials, UM-SL Spirit Items, School Supplies, Computers, Software, and Much More!

www.umslbookstore.com

University Bookstore

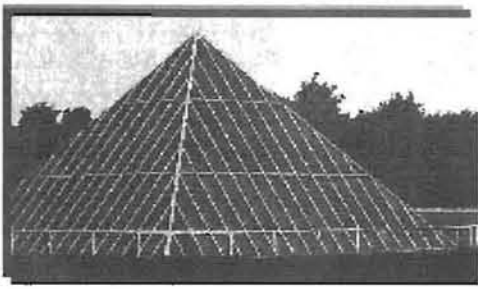
20% Coupon 20%

Show Your School Spirit and Save. Clip this coupon and receive 20% off your next purchase of any UM-SL clothing item. Regular Priced Clothing Only. Choose from T-Shirts, Hats, Sweatshirts, Sweatpants, Jackets or Shorts.

Valid July 15th • August 30th 2002 only. No Cash Value. May not be duplicated.

Where will you find...

- ... a virtual collection of 16 million items?
- ... research assistance?
- ... splendid works of art?
- ... over 135 databases?
- ... expert advice?
- ... online research consultations?
- ... quiet study areas?



North Campus
 Thomas Jefferson Library
 St. Louis Mercantile Library
 University Archives
 Western Historical Manuscript
 Collection

South Campus
 Ward E. Barnes Library

We bring your information needs into focus.

<http://www.umsl.edu/library>

The Libraries
 of the University of Missouri-St. Louis

Visit U-City and discover the giant 'Loop Rats'

RYAN MEEHAN
 Staff Writer

The last few years have brought unprecedented growth and revitalization to the U-City (or Delmar) Loop. Once a sagging testament to a time past, the Loop has bloomed into a throbbing center vital to St. Louis's cultural identity. The Loop's rise is no accident. A careful mixture of essential elements has created an addictive lifestyle cocktail.

Much of the Loop's recent successes can be attributed to the broad variety of tasteful shopping it offers to those with an artistic bent that is somewhat particular. The Loop is the section of Delmar running from the University City "Lion Gates," a landmark from the St. Louis 1904 World's Fair, to the intersection with Skinker Boulevard and a bit beyond into the St. Louis city limits. It's called the Loop because of the streetcar line that once circled the area. A fantasyland for the discerning consumer, the Loop's broad assortment of storefront windows display a dazzling variety of products that are more imaginative, fresh, and yes, hip, than anything that could be found in a mall. The Loop's identity is tightly wound with the alternative appeal of the products it gives to the consumer. From books and music to clothing and furniture, the Loop is a constant stopover for the discerning hipster.

A sampling of shops includes Subterranean Books, a used bookstore with the appeal of a London shop full of literary treasures for all budgets, and Flowers in the Loop, for creative flower fantasies. Other shops include Phoenix Rising and Meli-Melo, for eye-catching silver and stone jewelry as well as an eclectic array of fun and humorous items for the home. Vintage Vinyl is another gem of the area. This record collector's dream has with a huge room full of classic vinyl disks along the latest CDs. The great variety of businesses and shops, from cutting-edge hairstylists and art galleries to crafts from indigenous peoples in developing nations and news stands is probably the widest mix of anywhere in the St. Louis area. It's an adventure just to stroll down the street, peering in

the shops as you walk.

Yet it isn't all shopping, not by a long shot. There is plenty of buzzing activity that manages to sweat off the shackles of boredom. Warm breezes of live music tumble out of doorways that lead to heated entanglements of luscious merrymaking. There's spirited conversation taking place over a brisk walk leading to the Tivoli Theatre, where the artistic tempera-

"There is plenty of buzzing activity that manages to sweat off the shackles of boredom."

ment is able to consume the finest of the better side of the movie industry. Occurrences of spontaneous revelry erupting from the wellspring of chance meetings offered by the inviting character of sidewalk cafes. Opportunities for people watching are everywhere. For those with voyeuristic spirit who "just love to watch", one can ogle characters of all races, creeds, and cultural preferences as these phantoms of others worlds sink into the mosaic of identities that is the U-City Loop. This entire spectacle is sure to make the stomach growl in hedonistic approval, demanding that its needs are also met.

One of the anchors of the Loop is the restored 1920s Tivoli Theater, probably the top place in town to see current foreign, art and indie films. The beautiful architecture and the amazing assortment of movie posters and collectibles in the lobby of the Tivoli are worth a visit alone. For other nightlife, many of the restaurants and bars along the Loop offer live music. At the far end of the area, across Skinker Boulevard, stands the Pageant, which books top local and touring bands into its theater-converted-to-a-bar setting. Music in the area has great variety, including old

blues, jazz, ska, reggae, newer descendants of rock and country and other genres.

Cuisine abounds, dangling its toes in waters all over the world. Greek, Chinese, African, Lebanese, Spanish, Thai, Vietnamese, upscale eateries and neighborhood delis, all wrestle for the chance to delight one's palette. Among the restaurants found in the Loop is Riddle's Penultimate Café and Wine Bar. Despite its casual atmosphere, Riddle's offers gourmet, made-from-scratch, locally grown, natural foods with an emphasis on taste, along with, arguably, the best wine list in town. The Loop is also home to Blueberry Hill, a rock and roll bar with burgers and dartboards, the kind of place Hard Rock Cafe aspires to be. Both these spots, as well as Cicero's across the street from Blueberry Hill, offer nightly music of an intriguing variety. The Loop is one of the centers for the best local musicians.

Other culinary treasures can be found at Saleem's, with mouth-watering Lebanese cooking and plenty of garlic, or Delmar Café, a 1950s-cool themed restaurant and bar with serious steaks. These are just a few of the great restaurant and bar choices packed into these few blocks. Regardless of Mother's Day or Monday, the Loop is able to satisfy any dietary demand. Yet the food itself is only part of the appeal of a Loop eatery, because every establishment is essentially, in its heart, a neighborhood place.

The ultimate appeal of the Loop, through all the hype and hoopla, is that it is, essentially, a neighborhood. Stacked high to the sky, expanding corner-to-corner, urgent and inviting, apartment buildings dominate the skyline. People representing every choice on the menu find a place to rent. Some stay a year and others a lifetime. These people greet each other in passing as they stroll, discuss the produce offered at the farmer's market, introduce friends to friends and buy drinks for the whole the table. There's even a term for those who are such a constant in the Loop that they have become institutionalized; they are called "Loop Rats."

Got Housing?

Do your plans for the 2002-2003 academic school year include living and dining on campus? Rooms are going fast! Call soon to reserve your room.

Call 314-516-6877 or e-mail us at mullisc@msx.umsl.edu.

We would be happy to answer any questions you may have and/or send you an information packet.

We look forward to hearing from you soon!

Residential Life Staff

UM-St. Louis Office of Residential Life And Housing



Photo by Mike Sherwin/ The Current

The Coffee Cartel, sparsely populated during the day but busy at night, is one of the many outdoor cafés in the Central West End located near the intersection of Euclid and Maryland; others include Starbucks and The Grind. Both a residential area and a business area, the CWE has unique daytime shopping, relaxed nightlife and an excellent array of restaurants and pubs to please almost any taste.

Soulard The Landing

a choice of historic, but distinct, districts

CATHERINE MARQUIS-
HOMEYER
A&E Editor

Two historic districts, Soulard and Laclede's Landing, found next to or in Downtown, offer food drink and entertainment to the whole St. Louis area. But despite their common elements, each is a unique experience.

The historic neighborhood of Soulard, oldest in St. Louis, is home to the annual, sometimes rowdy, Mardi Gras festivities and parade and Bastille Day celebrations. Dating back to the 1790s, this originally French, working-class neighborhood is filled with restored old brick row houses surrounding private courtyards, mixed in with later elegant Victorian mansions. Soulard is a real neighborhood where people live and work. It is a mixed income residential area with a high number of pubs and restaurants, along with the Soulard Farmer's Market, which makes it an intriguing place to visit or to live.

The neighborhood has a stew of architectural styles, from the simpler redbrick shops and homes of the early 19th century to the showy Victorians. The architecture also has a combination of former industrial buildings, retail shops and homes from modest to ornate. Walking through Soulard, you can trace the development of St. Louis through the 19th century.

Soulard includes the very authentic McGurk's Irish Pub, 1860s Hardshell Café, Mike and Min's and other excellent food, drink and music spots. Many of these pubs and restaurants feature charming courtyards beyond their brick façades, and these are the Soulard version of the sidewalk cafe. Nearby attractions are the historic Anheuser Busch Brewery (take the tour); the eccentric, artistic Venice Café; the Lemp and DeMenil Mansions; and the Cherokee Street antiques row to the south. To the west are the stately Victorian mansions of Lafayette Square. To the north are BB's Blues and Soups and the Broadway Oyster Bar, informal, architecturally interesting hangouts with great food and hot music, which are just south of Busch Stadium. Soulard is a major center for the blues, and McGurk's is the place to

hear Irish bands from the Ole Sod. Soulard also has shops selling architectural bits from now-vanished buildings to renovators.

Throughout the year, nightlife is the major draw for those who live outside the neighborhood, and the Soulard residents know how to "laissez le bon temps roulez." The annual Mardi Gras festival is one of the biggest in the world, when people from all over flock to the street party. In addition to the big parade, there is also the Mystic Crewe of Barkus Dog Parade, where dogs and owners alike dress up for a walking parade through the brick streets. The streets are filled with people in colorful costumes of the green, purple and white of Mardi Gras. Numerous costume balls take place throughout the weekend leading up to Fat Tuesday. The Bastille Day celebration, which honors France's July 14 Independence Day, features another street fair, with vendors and fortune-tellers and more colorful costumes. On Saturdays throughout the warm part of the year, the sprawling historic Soulard Farmers' Market comes to life with a luscious selection of fruits and veggies, along with a flea market of unique odds and ends.

Soulard is the place in St. Louis that feels the most like a visit to a European or New Orleans neighborhood. It offers great pubs, great food, great historic architecture and an alternative to mainstream music. Soulard places are made for casual comfort and conversation, with Old World charm like a step back in time.

Laclede's Landing, unlike Soulard, is a business and entertainment district, not a neighborhood where people live. The area is home to hotels, corporate offices, shops, restaurants and bars. It is a center for tourists visiting the downtown area, whether they traveled from far away or just out in St. Louis County.

Laclede's Landing was a warehouse district. Although it is the oldest area of settlement, the present buildings are newer than the continually occupied Soulard, which was home to successive waves of immigrants. The buildings are plenty old by our standards but reflect the industrial nature of the area. The Landing has the original granite block cobblestone streets, which are

beautiful to look at but are better for walking than driving. It's a good idea to park near or in the Landing and walk around in the area for your visit.

Nightlife is the center, although there are daytime attractions as well. The Landing has sidewalk cafés but it also has posh restaurants offering fine dining, ritzier places than you will find in casual Soulard. One of the best restaurants is the congressionally themed Hannegan's, which has great traditional American food (not home style, but traditional restaurant fare like Prosperity Sandwiches and Lobster Bisque). The décor is a lot of fun, with dark wood booths lit by green shaded bankers lamps and references to the era of big political bosses on the walls. On the less pricey end is the Victorian themed Old Spaghetti Factory, a favorite of families visiting the area.

The Landing also does more mixing of the modern with the historic, and an old brick warehouse may house a techno club with glass and steel décor inside. The music is often more mainstream and pop, but there is some variety too. Some bars are cozy but others have that pick-up spot, meat-market reputation. "Happy hour" is the theme of some streets.

The Landing is the home to Mississippi Nights, one of the best midsize music venues in the area. Here you can see nationally known acts in a close-up, dimly lit, bar setting, with cabaret seating-no reserved seats, just pay the cover at the door (or buy your tickets in advance). Obviously, these won't be the acts that fill venues like the Savvis Center (no Britney Spears) or the UMB Bank Pavilion, but rising bands or bands with a narrower appeal appear here. But it's a great intimate way to see the musicians work. Often, you'll see them here or at the Pageant and next year, they are at the Savvis. Or not, if they stay out of the mainstream.

Laclede's Landing is a favorite of tourists and the high rents keep the mix of bars every changing. It's one of the trendiest areas and can be pricey but it is a lively area. It's where you would go for a high energy, more upscale bar scene and pop music.

FYI

www.umsl.edu/technology/training

FREE on-line learning courses for students, faculty and staff

Choose from over 700 information technology courses

- ◆ Self-paced
- ◆ Simulation based
- ◆ Accessible with your gateway id
- ◆ End-user and technical level courses
- ◆ Web-hosted by XtremeLearning for NETg
- ◆ Details at www.umsl.edu/technology/training

Enhance your IT knowledge at your convenience

Information Technology Services
Your Gateway to Technology @ UM-St. Louis



If you think that flyers are getting the word out for you on campus....



Think Again.
Buy an ad. Save a tree.

Current Advertising
516-5316

The MetroLink

A fresh look at a familiar city

KELLI SOLT
Senior Writer

North Metro Station-3:32 p.m. A metro speeds off, followed nine minutes later by another to carry commuters off to the city. Most passengers are homeward-bound, on the way to where their cars are parked or off to work.

Riding the MetroLink can make the commute convenient, cheap or provide a change of scene.

An informal poll found that many people view the MetroLink as restrictive because of its limited service area. It only runs east and west now, but money has been allocated to expand it to Clayton by 2005. Residents of St.

Charles continue to deny proposals to link up despite the city's growing population.

Public rail transit is in its infancy in St. Louis, but UM-St. Louis students can still benefit by taking a ride.

UM-St. Louis is a commuter campus. With 9,750 parking passes sold fall semester and 12 student-parking garages, circling the lot for a spot is not foreign to most students. However, students who have shelled out the cash to attend UM-St. Louis can take advantage of one of the few perks that comes with enrollment: free access to MetroLink.

Jason Wyman, a junior computer science major, takes a 10-minute ride every day to University City. At the

Delmar stop he just has an additional 15-minute walk home.

If the metro does not help your commute, it can still provide a change of pace.

Thuraya Al-Taai, a junior communications major, lives at The University Meadows and uses the MetroLink almost every day to go shopping or to parties and concerts.

"It is convenient for me and fast, and it goes just about everywhere I need to go," Al-Taai said. "However, sometimes, I don't feel safe."

Three police departments are assigned to the MetroLink, including Illinois, St. Louis, and St. Louis County. Officer Denny Durso, a patrolman who has served in the area

for 25 years, rides the rail to ensure safety on the MetroLink.

"There isn't too much crime," Durso said. "Just soliciting, fare-skipping, a few assaults."

In addition to police, ticket security employees check for passes and tickets throughout the day. Cassandra Jones, who has worked for MetroLink for about a year, hasn't had many problems with people. She said that most people who ride use passes rather than tickets. She also assists physically handicapped people on and off the train, which features wheelchair access.

Students can take a ride to the airport to cut down on the expense and hassle of airport parking. The police department allows extended parking on campus with completion of a vehicle identity form from its office on North Campus.

Riding from North Campus to the last Missouri stop, the Mississippi Riverfront, takes a little over a half hour. If you take off from campus a little after 4 p.m., you can catch a sunset with the backdrop of the Arch and cityscape, then maybe head to the Casino Queen to pull a few slots or grab a bite to eat in one of the many restaurants on Laclede's Landing.

Other popular stops include Union Station and Delmar, which can put riders in walking distance of malls or shops. Central West End and Hanley cater to business commuters. Of course, Busch Stadium, the Convention Center, and Kiel (Savvis) Center stations get crowded during sporting events. Each stop takes anywhere from two to three minutes travel time.

If you have not taken a ride on the MetroLink yet, hop on and see where it takes you. At least you will arrive with a whole new view of the city.



Riding the MetroLink is free for currently-enrolled UM-St. Louis students. Present your class schedule in the Cashier's Office in 285 MSC. For additional about MetroLink, including timetables, route maps and fare, visit www.bf-state.org.

File Photo/The Current

FREE PAGERS!!!

1-888-487-7247 CALL NOW!

1-888-487-7247 CALL NOW!

"ALSO FEATURING THESE SERVICES"

Local Phone Service from **\$30-\$50** **

Long Distance Service from **FREE** - 7 cents/min

Internet Service...\$17/mo.

Cell Phones / Website Builder / Online Shopping

www.excelir.com/justgotpaid

Global ID# 3749843114

**Subject to state availability
1-888-377-0312 for Rep Support

Looking for a résumé-builder?
Looking to become involved?
Looking build your portfolio?

The Current is hiring.

See page 9B of this issue.

If you've had unprotected sex,

don't wait for a period that may never come.

You have 72 hours to prevent pregnancy with Emergency Contraception.

Visit us for a full range of affordable health care options, including:

- annual exams
- birth control
- pregnancy testing
- information & referrals
- STD testing & treatment
- HIV testing & counseling
- screening for breast & cervical cancer

We also offer services for men!

Planned Parenthood®
of the St. Louis Region

Call 1-800-230-PLAN
or visit us online at www.ppslr.org

Welcome to
UM-St. Louis!

Take a big step toward your future!

Register with Career Services!

We can help you with ----
part-time jobs --- career-related jobs ---
resume and interview tips --- personalized
job search assistance --- and more!

Visit or call us today!

Career Services

327 Millennium Student Center
314-516-5111
www.umsl.edu/depts/career

Welcome to University Health Services



Dedicated to promoting wellness through care and education for the university community.

We see students for:
 birth control education
 colds
 ear aches
 flu
 migraines/headaches
 pink eye
 poison ivy
 pregnancy testing
 rashes
 sore throats

We provide:
 blood pressure checks
 cholesterol screenings
 diabetes screenings
 hearing screens
 Hep A vaccine
 Hep B vaccine
 measles booster
 meningitis vaccine
 pap smears
 limited prescriptions
 tuberculosis screening
 tetanus vaccines

For appointment or information, call (314) 516-5671.
Call 911 for medical emergencies.
University Health Services • Millennium Student Center Room 125

Where lawn concerts continue rain or shine

ERIK BUSCHARDT
Web Editor

Nestled in West Saint Louis County, the UMB Bank Pavilion offers concertgoers a chance to enjoy some great music in an outdoor setting, overlooking Creve Coeur Lake and Earth City. Many St. Louisans still know it by its former name, the Riverport Amphitheatre.

The Pavilion is one of the top local spots for big name concerts. This summer's performance lineup includes Widespread Panic, Poison, Deep Purple and The Scorpions and Brooks & Dunn Neon Circus and Wild West Show. In addition, the widely popular "Ozzfest" will be here in mid-August.

Because of the tight schedules of some artists, the concerts continue regardless of the weather. The Budweiser Concert Series is hosted there, in addition to the annual Point Fest from KPNT and Summer Jam from KSLZ.

The venue first opened in Maryland Heights under the name Riverport Amphitheatre to great fanfare. However, the name was recently

changed to the UMB Bank Pavilion. Clear Channel Entertainment (CC.com), the same group that owns KSLZ Radio (Z-1077) and KSD 93.7 ("The Bull"), has an agreement with UMB Bank, whereby UMB customers are offered exclusive discounts for select show times. One might assume that UMB actually owns the pavilion since their name is on it, but Clear Channel Entertainment actually operates and manages it.

The outdoor amphitheatre offers spectators stadium-style seating for concerts and performances, with additional space for concertgoers on a lawn hillside directly behind it.

The pavilion hosts 500,000 people every year, with 20,000 people at one sitting (7,000 stadium seats and 13,000 lawn seats). The term "lawn seats" is a bit misleading, as it means you get some space on the lawn. You can bring a blanket or a folding chair. Folding chairs are also available to rent.

Styles of music generally include alternative, rock and new age country. Previous bookings include Aerosmith, Cher, Meat Loaf, Incubus, Poison, Creed, Goo Goo Dolls, Tom Petty and

the Heartbreakers and Brooks and Dunn.

In good weather, the warm outdoor setting has lots of audience appeal and can make this setting ideal, especially if the artist is playing around sunset. Being surrounded by 19,999 other fun, enthusiastic people is an experience like none other. Of course, you get to see the big touring bands and festivals.

There are some drawbacks to the Pavilion. In the event of a cancellation or postponement, ticket-holders are required to return their tickets to where you originally bought them, even if they were purchased online. It can sometimes be hard to get refunded for cancelled shows; however, if one follows their guidelines he should be in good shape. In bad weather, several obvious drawbacks also exist for the UMB Pavilion, as they do for any outdoor amphitheatre where the concerts continue whether the weather is pleasant or not.

Overall, the UMB Pavilion is a good value. For additional information on the Pavilion and its upcoming events, visit http://www.ksdfm.com/umb_bankpavilion_calendar.html.

www
 • thecurrentonline •
 com

EGG DONORS NEEDED - \$3500 Stipend
 You can make a difference and help a couple go from infertility to family. If you are 21-34 & have a good family health history, then you may qualify.

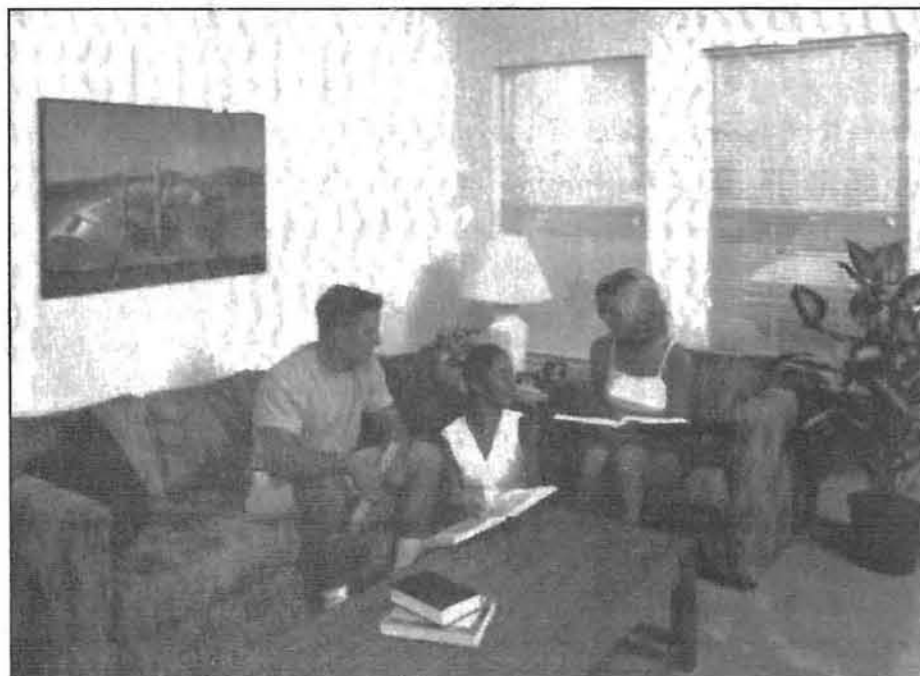
All ethnicities needed.

Call (800) 780-7437, anonymous and confidential.

Space is still available.

Sooo...

Call now



University Meadows

Individual lease liability, Swimming Pool, Spa, Barbeque Pavilion, Sand Volleyball Court, Limited Access Gate, Cable Access, Computer Hookups, Roommate Matching

314.516.7500

Umeadows@hotmail.com

<http://www.campushousing.com/umsl>

West Port Plaza: hotels, restaurants, bars, comedy

ERIK BUSCHARDT
Web Editor

Located at the northwest corner of the intersection of Interstate 270 and Page Avenue, West Port Plaza resembles a Swiss Mountain Village, with shops and restaurants coupled with leased office space and the Sheraton West Port Hotel. It is a collection of entertainment and industry venues that create a pleasant shopping, dining and working experience for tenants and guests.

Forty-two acres have never before been this well spent in terms of retail space and development. Because it is located next to one of the main thoroughfares of St. Louis County (I-270), West Port Plaza is ideally located with easy access to every major attraction

in St. Louis. And that means it's within a short drive of campus.

Restaurants include Casa Gallardo, Dierdorf & Harts, Nino's Steak and Seafood, Ozzie's Restaurant and Sports Bar, The Robata of Japan, the Saint Louis Bread Company, Starbucks Coffee Company and the Trainwreck Saloon. Many of these restaurants provide a location for a special night out. It's also the home of the Comedy Club, where you can see touring and local comedy acts in a cabaret setting.

Whether you plan to schedule a fancy lunch or meeting, or take a special date for a ride in a horse-drawn carriage, you can do it at the West Port Plaza. While much of the Plaza caters to business travelers, it is pleasant place for a stroll surrounded by a bit

of Europe.

This is a good area for hotels in the county area but away from the airport. Hotels located on and off the main property include Baymont Inn and Suites, The Best Western, Comfort Inn, Courtyard by Marriott, Holiday Inn, La Quinta Inn and Suites, Red Roof Inn and the Sheraton Plaza Hotel and Lakeside Chalet. In addition, hotel accommodations include the Drury Inn, Hampton Inn Westport and the Extended Stay America, where business travelers or other guests can rent short-term living space.

West Port Plaza offers pleasant bars and posh décor in restaurants. This is a good spot for a special date or an evening of laughs at the Comedy Club.



after this, the corporate ladder will be a piece of [cake].

In the course of facing challenges like this, you'll learn how to think on your feet. Stay cool under pressure. Take charge. Talk to an Army ROTC rep. You'll find there's nothing like a little climbing to help prepare you for getting to the top.



ARMY ROTC Unlike any other college course you can take.

Register for Adventures in Leadership - MS101/MS201
Call (314) 935-5521

Film festivals span the year

CATHERINE MARQUIS-HOMEYER
AGE Editor

Besides being home to theaters that provide first run art house films, St. Louis also offers some special film festivals and ongoing film programs.

The big film festival event is the annual St. Louis International Film Festival, which takes place over about 10 days in early November. This ever-growing program features better than 100 films, with a special focus on bringing the best foreign-language films to our area. The films are mostly recent; usually films released in the last two years, and also include documentaries and short films. It is usually the only place you have a chance to see Oscar nominated documentaries and shorts. The festival runs from afternoon to evening over its ten days, and most films are shown twice to give festivalgoers a

better chance to see them all. In the past the Festival has taken place at the Tivoli Theater, the Hi Pointe and Webster University. The festival office starts distributing programs for SLIFF in October, or you can check their website at <http://www.sliff.org>. The festival organization also sponsors a local filmmakers showcase in June and a Best-of-Fest return showing of some of the top film from the fall event, usually in February.

If you like older films, there is the Meramec Classic Films festival, which appears every other year at St. Louis Community College at Meramec. The primary emphasis of this free, two-day festival is silent films, and it is about the only place in town to see these great history films, which are given live accompaniment. In addition, the festival showcases student films in each program. This festival takes place in May 2003. It is open to the public, free, and you can find out more about it from the community college in April 2003.

For cult film fans, the Tivoli Theater offers a Midnight series every year, with two cult favorites or offbeat films running every weekend at midnight throughout the summer months. Contact the Tivoli Theater, and they will be glad to give you a poster listing the films. Another place to see offbeat and cult films is the City Museum's Cinema in the City, an after-hours once-a-month screening in Beatnik Bob's Café in the Museum. The films are sponsored by the Webster Film Series and you can get info on the films from them.

Which brings us to the year round program offered by Webster University. The Webster Film Series is open to all and shows a great variety of films, from foreign to classic to cult to the off-beat indie films. Not all films are new, and this is usually one of the best places to see great classic films and obscure or little shown films. The program runs year round, and you can find out more by contacting Webster University.

Catholic Newman Center Welcomes Students!

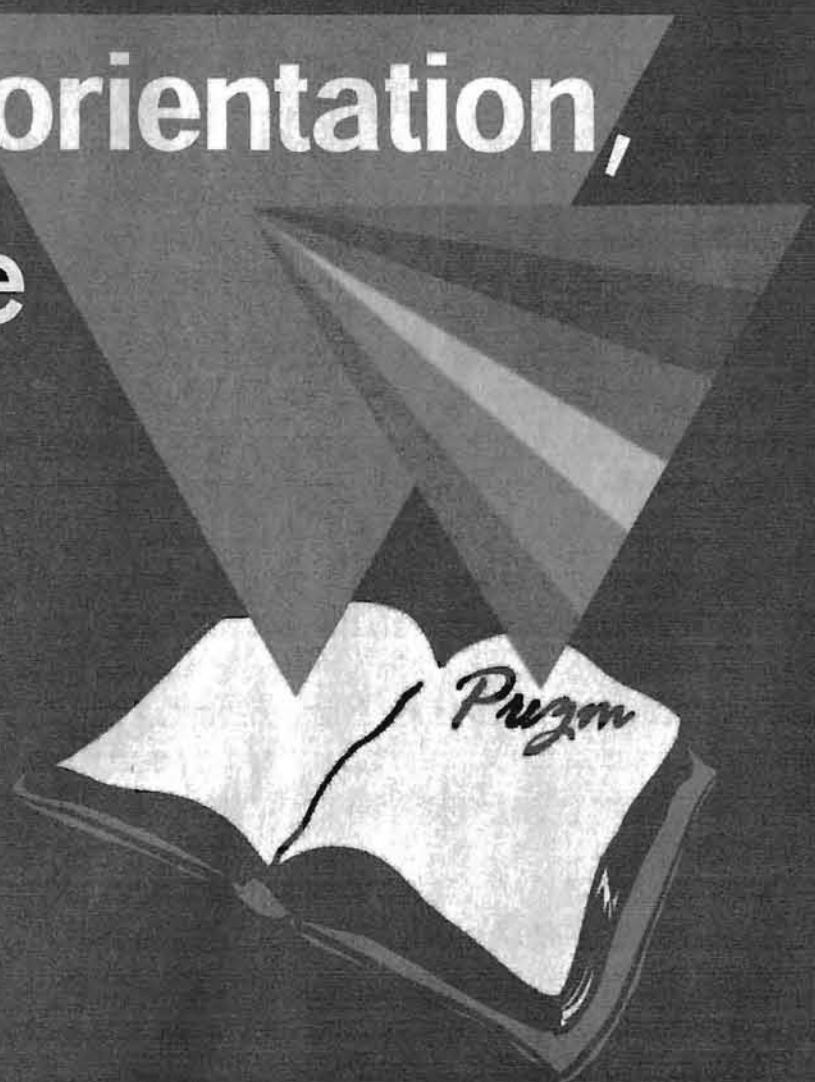


Join us for mass on Sunday nights at 8:30 p.m., at the Bellerive Residence Hall Chapel starting August 18.

Reach us at 385-3455 and check us out on the web at www.umsl.edu/~newman

Gay? Lesbian? Bi? Straight? Unsure? Queer? Trans?

Whatever your orientation, we have a place for you in **Prizm**



314-516-5013
out@admiral.umsl.edu
umsl.edu/studentlife/lgbcs
Millennium Student Center 384

Buying dinner on a budget

MIKE SHERWIN
photography director

Students everywhere generally have a common dilemma: education expands our horizons, yet our cash flow stagnates. Luckily, St. Louis has a host of eateries that are gentle to fragile budgets. From standard American diners to exotic ethnic buffets, great deals abound.

Here are some of the best palate-pleasers that won't offend your pocket-book.

Babylon International

3171 South Grand Boulevard
Hours: Sunday through Thursday, 11 a.m. to 9:30 p.m.

Friday and Saturday 11 a.m. to 11 p.m.
Grand Boulevard, between Arsenal and Gravois, has become somewhat of a mecca for its variety of ethnic restaurants. Between Vietnamese, Thai, French, Nicaraguan (the list goes on and on), diners may have difficulty deciding which world cuisine to sample.

Babylon International serves wonderful Middle-Eastern dishes, including falafel (fried garbanzo dumplings), hummus (a fragrant dip made with garbanzos and tahini), biryani (a rice pilaf-type dish) and gyros.

Although the restaurant is full-service, with entrees from \$8.40 to \$12.95, the best deal is in their sandwiches. At two dollars and forty-five

cents, Babylon International has one of the cheapest falafel sandwiches in town.

Courtesy Diner

1121 Hampton Avenue
Hours: Monday 6am-10pm.
Tuesday through Friday 6 a.m.-4 a.m.
Saturday and Sunday open 24 hours

If you're looking for attentive service, haute cuisine or sparkingly clean floors, then Courtesy is not for you. However, if you want a cheap, laid-back place to grab a hamburger, pancakes or just a cup of coffee, then you are in for a treat. St. Louis has a plethora of greasy spoons, but Courtesy is one of the best. At sixty-five cents, the bottomless Courtesy cup of coffee is a favorite among penny-pinchers.

Here some sample prices: Short Stack of Pancakes: \$2.10; Hamburger: \$1.60; Cheese Omelet: \$2.50. In addition to the food, Courtesy keeps a (sometimes) great jukebox with selections of classic rock, current pop and country music.

Govinda's

3926 Lindell Boulevard
The building reads, "The Center for Krishna Consciousness." Is this a restaurant or a Krishna house of worship? Well, it's both, actually. Govinda's combines a temple and an all-you-can-eat restaurant in one building.

For \$5.00 at lunch (\$6.00 at dinner) visitors can dine on delicious vegetari-

an meals. The food is somewhat like Indian food, except without any onions or meat products. The whole restaurant is redolent with the scents of exotic spices and incense. The meals vary every day, but the format always stays the same: white or brown rice, a vegetarian entrée (subjee), a soup (dal), a vegetable side, two kinds of bread, a vegetable fritter, salad and desert (halava). The halava alone is worth the price of the buffet. It's a delicious semolina desert, usually made with some kind of fruit. And, since the menu changes everyday, you can always find a pleasant surprise.

Oh, and if you're worried about the stereotype of the ever-soliciting missionary Krishnas, don't. The Krishna workers are very friendly and don't harass the customers with religious indoctrination.

Mangia Italiano

3145 South Grand
Hours: Monday through Saturday 11 a.m. to 1:30 p.m.

Mangia has been around for a long time, selling delicious, freshly-made pastas and generally catering to the eccentric side of St. Louis. Mangia is also a great bargain, particularly around lunch time. The pasta buffet at lunch is quite a good deal for \$5.95. If you enjoy fresh Italian food, you definitely need to check out Mangia. With a wide selection of beers and tasty Italian sodas, Mangia is also a great place for a drink on Friday and Saturday nights when they host live jazz bands (with no cover!).

Restaraunts around campus

CATHERINE MARQUIS-HOMEYER
A&E Editor

You're hungry, and you have a mid-day break between classes. Maybe it's a long break and you're thinking it might be nice to get off campus for a while. If you want something more than fast food and are willing to go a short distance, here are three places close by you might want try for breakfast, lunch or dinner. These choices are presented from early in the day to late, from most casual to more formal, and also from least to most expensive.

For breakfast, it is hard to beat the Goody Goody Diner. This family-run operation has all the breakfast traditions, at an affordable price. This is a

simple and friendly place that a breakfast lover must seek out. A great place before class or for an early break. The Goody Goody bills itself as a "St. Louis tradition since 1948." You can find the Goody Goody Diner at 5900 Natural Bridge Road, a short drive east of South Campus.

At lunchtime, you might be tempted by the salads and tropical décor of the Breakaway Café. This cozy restaurant is a favorite of faculty because it's so close; so don't be shocked to see your professor there. This small, maybe even tiny, restaurant is located at 8418 Natural Bridge Road, just west of the North Campus. Despite its small size, Breakaway manages to fit in quite a crowd. The menu is appealing, with a nice selection of salads and sandwich-

es, but service is a bit slow at the rush, so allow enough time. After all, it's not fast food. The Breakaway is a bit pricier than the Goody Goody or the fast food joints, but its tastier than some of the choices on campus or Mickey D's.

By dinner you might want the substantial meal from Spiro's. Spiro's is the most formal and most expensive on the list but is also the spot where you could get a fancier meal. It is located practically next door to the Breakaway Café, in the same row of businesses. The address is 8406 Natural Bridge Road. Spiro's offers Greek cuisine along with American favorites, but you don't want to miss baklava for desert. Spiro's also serves lunch but its neighbor, the Breakaway Café, is more casual and might be more affordable.

University of Missouri St. Louis
UM St. Louis
Counseling Services

UM-ST. LOUIS COUNSELING SERVICES

Helping you to help yourself:

- *Choose a major/career
- *Manage stress
- *Increase concentration
- *Build self-confidence
- *Increase motivation
- *Set Priorities
- *Improve grades
- *Build relationships

For a free confidential consultation, call us or stop by:

Counseling Services
126 Millennium Student Center
516-5711

NOW Hiring

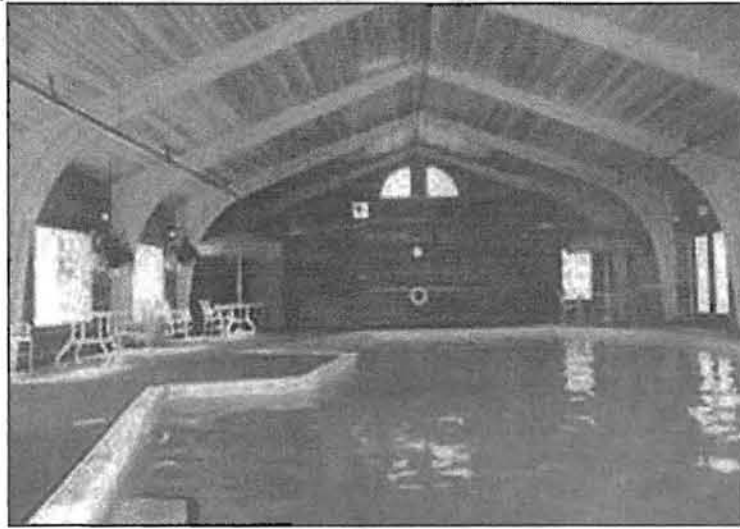
Why join *The Current* staff?

- Located on campus
- Practical experience in your field
- Flexible work schedule
- Build your portfolio
- Laid-back environment
- Be a part of the college newspaper awarded best-of-state

Apply today for a job at *The Current*. Submit your cover letter and resume to 388 MSC. For information regarding these positions, contact Stanford at 516-5183 or Anne at 516-6810.

- Business Manager
- Production Manager
- News Editor
- Features Editor
- Staff Writers
- Advertising Representatives
- Production Associates
- Advertisement Designer
- Photography Director
- Photographers
- Office Manager
- Web Master
- Distribution Manger
- Distribution Associate
- Columnist

Oxford Hills



Paradise Found!

At Oxford Hills extraordinary services in combination with outstanding amenities provide a lifestyle of true luxury & freedom without the exorbitant price tag.

- ✓ Breathtaking Mature Landscaping
 - ✓ Indoor Pool and Two Outdoor Pools
 - ✓ 24 Hour State-of-the-art Fitness Center
 - ✓ Spa Jacuzzi
 - ✓ Tennis and Basketball Courts
 - ✓ Playground Fully Equipped for Fun
 - ✓ Free Rush Hour Breakfast
 - ✓ Concierge on Staff At Your Service
 - ✓ Valet Service to and from the Airport
 - ✓ Vacation Pet & Plant Care
 - ✓ Free Cardio Kickboxing Classes
 - ✓ Movie & Popcorn Nights
 - ✓ Free Movie Rental & Library Services
 - ✓ Wall to Wall Berber Carpet available
 - ✓ Garage Parking Available
 - ✓ Package Delivery for Our Residents
 - ✓ Hospitality Suites Available for Guests
 - ✓ Dry Cleaning Drop Off Service
 - ✓ BBQ & Picnic Area
 - ✓ Carwash Area
- ✓ Awesome Monthly Parties in our Beautiful Clubhouse/Business Center

Visit Oxford Hills Apartments where luxury is an established tradition!



10304 Oxford Hill Drive
Creve Coeur, MO 63146
(314) 567-4440

662 JMSL-NP 1475
YBC 145002-1

AM Member of the American Management Association